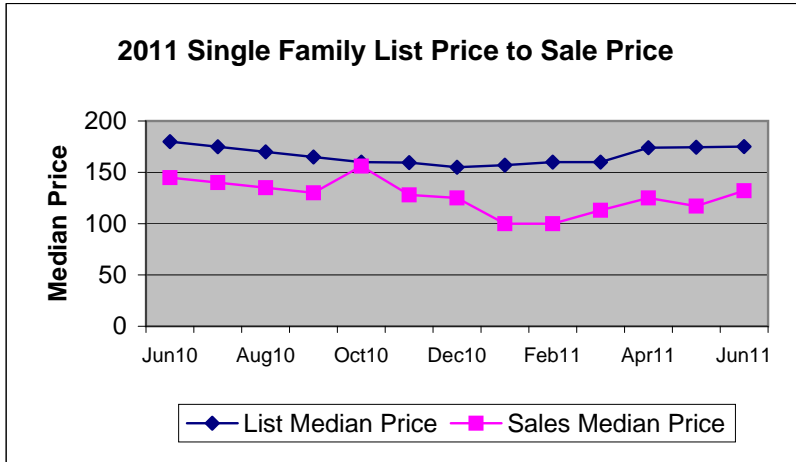
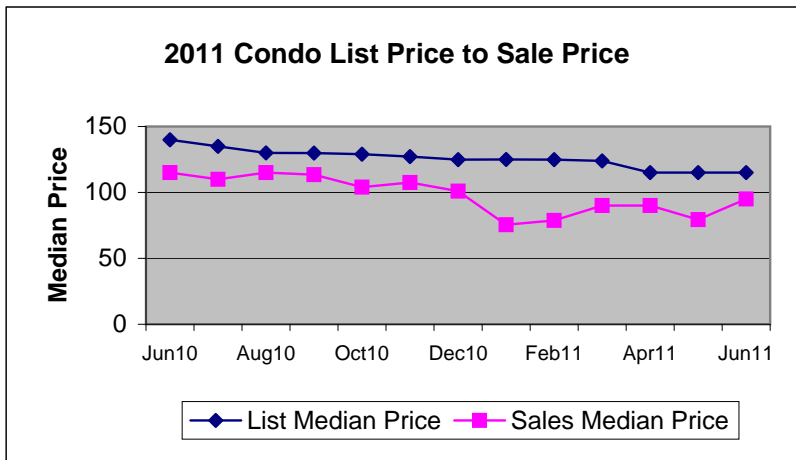


Residential Sales and Listing Analysis



Listings By Price Class

Price Class	SF	Condo
\$29,999 or under	85	214
\$30,000 - \$39,999	90	224
\$40,000 - \$49,999	118	270
\$50,000 - \$59,999	131	293
\$60,000 - \$69,999	165	303
\$70,000 - \$79,999	181	343
\$80,000 - \$89,999	163	251
\$90,000 - \$99,999	215	187
\$100,000 - \$119,999	327	296
\$120,000 - \$139,999	334	295
\$140,000 - \$159,999	340	202
\$160,000 - \$179,999	276	207
\$180,000 - \$199,999	196	171
\$200,000 - \$249,999	333	296
\$250,000 - \$299,999	295	250
\$300,000 - \$399,999	359	298
\$400,000 - \$499,999	266	145
\$500,000 - \$599,999	153	97
\$600,000 - \$699,999	126	60
\$700,000 - \$799,999	86	41
\$800,000 - \$899,999	65	35
\$900,000 - \$999,999	46	13
Over \$1,000,000	305	93
Totals	4,655	4,584
Median (thousands)	175	115
Average (thousands):	368.9	204.9



Absorption Rate**

	Single Family				Condo			
	2008	2009	2010	2011	2008	2009	2010	2011
Jan	3.8%	4.9%	6.8%	9.3%	2.9%	2.8%	5.7%	6.9%
Feb	4.3%	6.0%	7.9%	10.2%	3.6%	3.9%	6.6%	8.9%
Mar	5.4%	7.7%	11.5%	14.5%	3.6%	4.9%	9.5%	12.2%
Apr	6.3%	8.5%	13.0%	15.4%	4.1%	5.3%	10.6%	13.2%
May	6.8%	8.9%	12.5%	15.3%	4.7%	5.7%	9.1%	11.9%
Jun	7.3%	11.1%	12.4%	16.9%	4.5%	7.0%	7.9%	11.6%
Jul	6.1%	11.1%	8.3%		4.3%	6.9%	6.1%	
Aug	6.1%	10.3%	9.0%		4.3%	5.7%	6.5%	
Sep	6.2%	11.5%	8.3%		3.6%	7.8%	7.0%	
Oct	6.0%	11.3%	7.9%		3.6%	6.8%	6.6%	
Nov	5.0%	9.6%	8.3%		3.4%	5.7%	6.3%	
Dec	6.8%	9.9%	11.9%		4.2%	8.0%	9.4%	

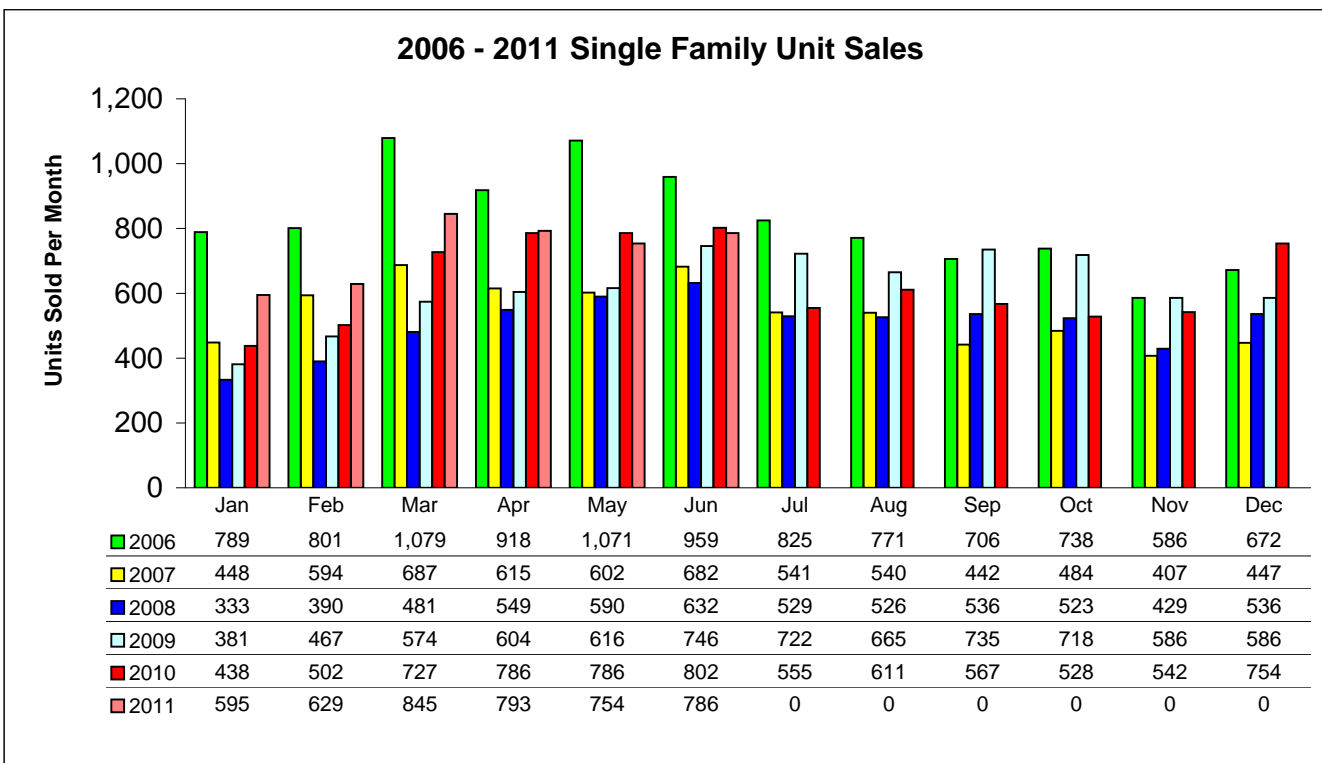
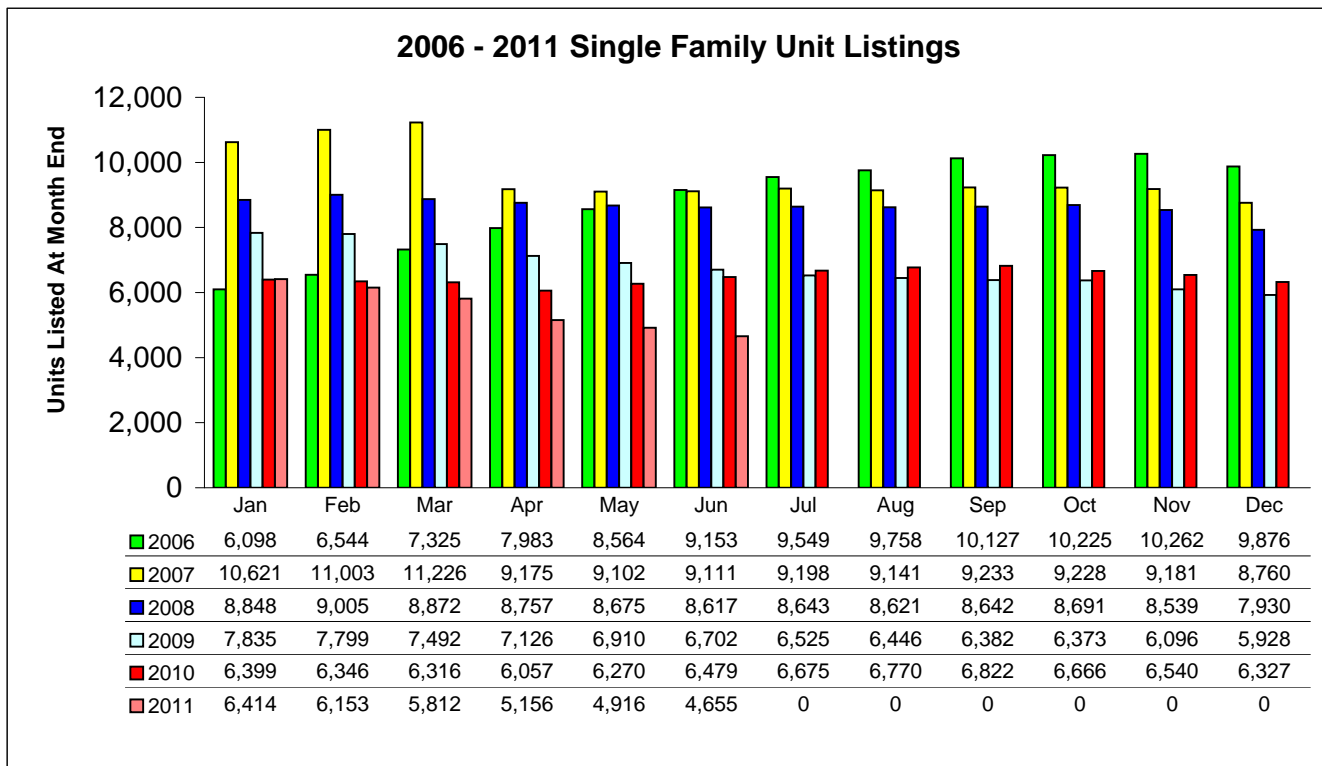
**Pinellas Realtor®
Organization**

Additional Information

**Absorption Rate (Inventory Turnover) is determined by dividing the number of units sold during the month by the total number of listings in the MLS.

Residential Graphical data represents the combined Single Family and Condo Sales data.

Single Family Listing and Sales Comparison By Unit



2011 Single Family Unit Sales

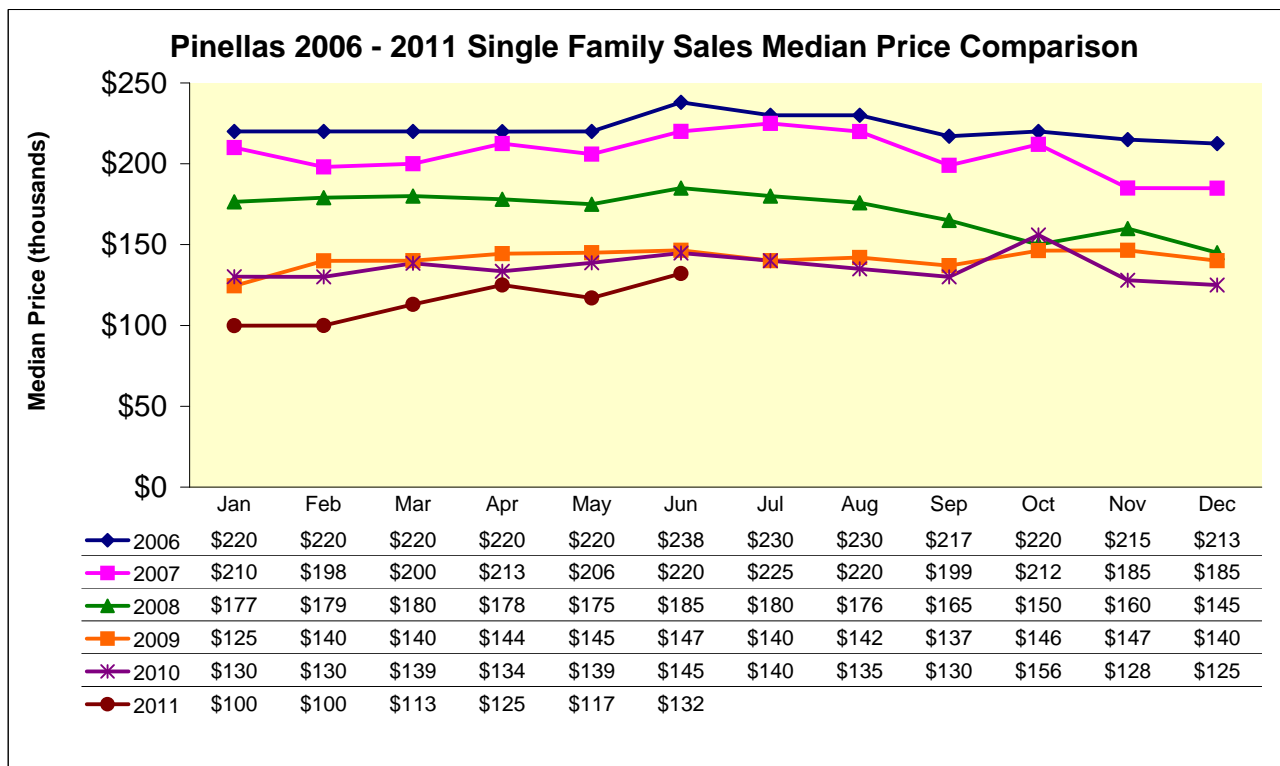
MTD Comparisons		YTD Total	Jan	Feb	Mar	Apr	May	Jun	Jul	Aug	Sep	Oct	Nov	Dec
2010 Units	7,598	Units	438	502	727	786	786	802	555	611	567	528	542	754
		% of YTD	5.8%	6.6%	9.6%	10.3%	10.3%	10.6%	7.3%	8.0%	7.5%	6.9%	7.1%	9.9%
2011 Units	4,402	Units	595	629	845	793	754	786						
		% Change	35.8%	25.3%	16.2%	0.9%	-4.1%	-2.0%						
2010 Median Price		(thousands)	\$130.1	\$130.0	\$138.5	\$133.5	\$138.8	\$144.8	\$140.0	\$135.0	\$130.0	\$156.0	\$128.0	\$125.0
2011 Median Price			\$99.9	\$100.0	\$113.0	\$125.0	\$117.0	\$132.1						
		% Change	-23.2%	-23.1%	-18.4%	-6.4%	-15.7%	-8.8%						
2010 Mean Price		(thousands)	\$183.1	\$169.3	\$187.9	\$197.9	\$184.4	\$199.2	\$198.9	\$180.9	\$178.4	\$201.5	\$170.9	\$203.7
2011 Mean Price			\$167.0	\$159.2	\$174.9	\$194.5	\$181.5	\$194.9						
		% Change	-8.8%	-6.0%	-6.9%	-1.7%	-1.6%	-2.2%						

YTD Comparisons		MTD Total	Jan	Feb	Mar	Apr	May	Jun	Jul	Aug	Sep	Oct	Nov	Dec
2010 MTD	4,041	Units	438	940	1,667	2,453	3,239	4,041	4,596	5,207	5,774	6,302	6,844	7,598
2011 MTD	4,402	Units	595	1,224	2,069	2,862	3,616	4,402						
% Change 2011 MTD	8.9%		35.8%	30.2%	24.1%	16.7%	11.6%	8.9%						

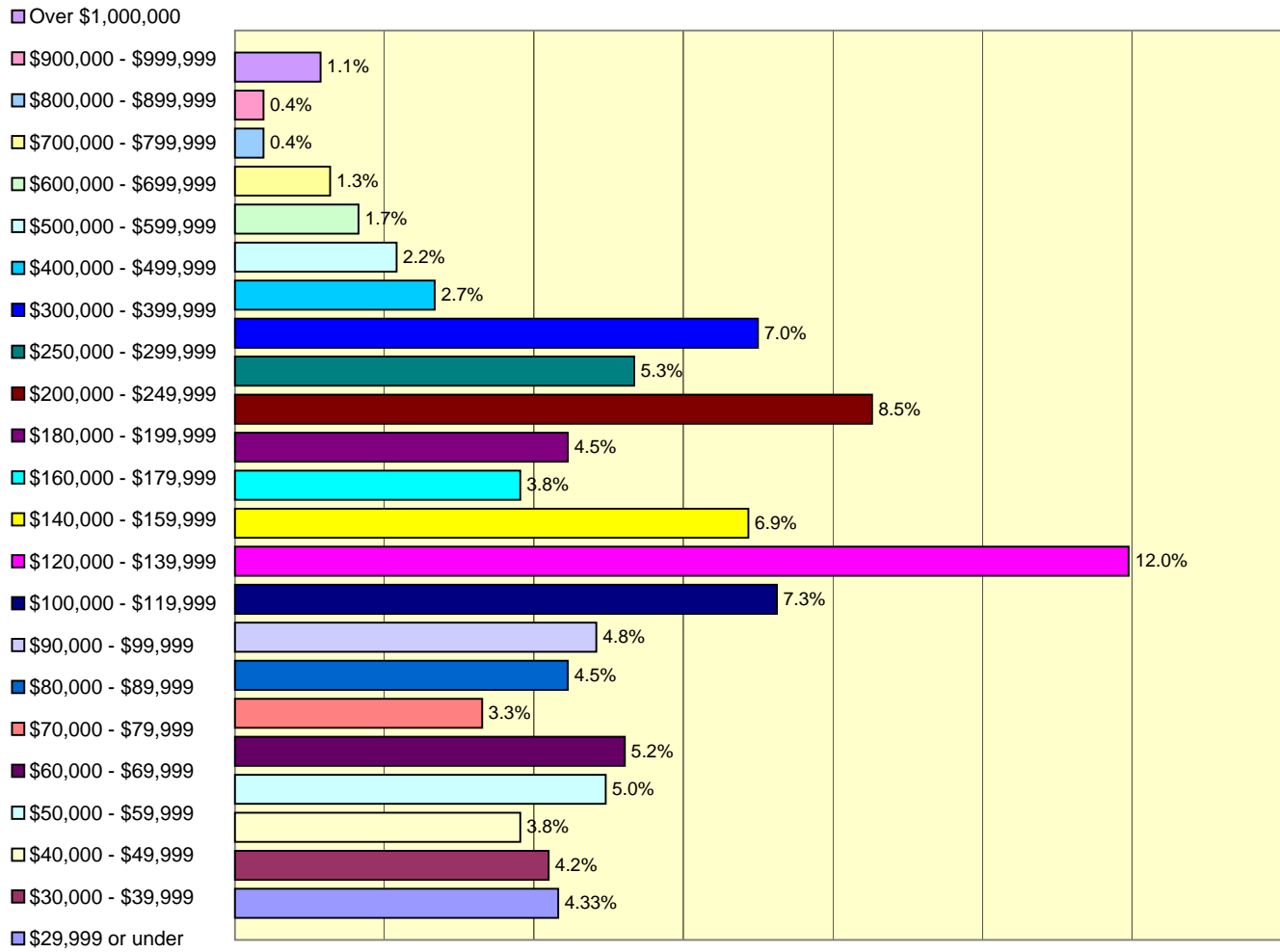
Prices by Bedroom		YTD Total	Jan	Feb	Mar	Apr	May	Jun	Jul	Aug	Sep	Oct	Nov	Dec
2011 Prices		(thousands)												
2 or Less	Median Price		\$60.0	\$65.0	\$64.0	\$73.5	\$60.0	\$82.0						
	Mean Price		\$75.2	\$84.7	\$84.7	\$91.4	\$78.2	\$90.8						
3	Median Price		\$108.0	\$115.0	\$119.2	\$130.0	\$126.5	\$135.0						
	Mean Price		\$139.3	\$153.6	\$154.3	\$173.1	\$156.0	\$172.3						
4 or More	Median Price		\$265.0	\$249.9	\$240.5	\$297.5	\$268.5	\$265.5						
	Mean Price		\$385.8	\$327.8	\$365.9	\$375.9	\$366.5	\$343.3						

Single Family Unit Sales														
Price Class	YTD Total	% of YTD	Jan	Feb	Mar	Apr	May	Jun	Jul	Aug	Sep	Oct	Nov	Dec
\$29,999 or under	319	7.25%	45	56	54	50	80	34						
\$30,000 - \$39,999	248	5.63%	46	41	60	36	32	33						
\$40,000 - \$49,999	260	5.91%	54	46	47	42	41	30						
\$50,000 - \$59,999	245	5.57%	44	38	49	31	44	39						
\$60,000 - \$69,999	218	4.95%	31	42	45	36	23	41						
\$70,000 - \$79,999	232	5.27%	38	34	50	38	46	26						
\$80,000 - \$89,999	202	4.59%	23	33	41	32	38	35						
\$90,000 - \$99,999	160	3.63%	17	23	30	31	21	38						
\$100,000 - \$119,999	345	7.84%	37	45	67	74	65	57						
\$120,000 - \$139,999	384	8.72%	40	44	67	76	63	94						
\$140,000 - \$159,999	256	5.82%	37	31	50	41	43	54						
\$160,000 - \$179,999	197	4.48%	21	28	43	39	36	30						
\$180,000 - \$199,999	163	3.70%	19	20	33	30	26	35						
\$200,000 - \$249,999	311	7.06%	43	43	50	59	49	67						
\$250,000 - \$299,999	194	4.41%	22	25	35	38	32	42						
\$300,000 - \$399,999	279	6.34%	35	35	59	57	38	55						
\$400,000 - \$499,999	133	3.02%	19	19	26	27	21	21						
\$500,000 - \$599,999	86	1.95%	9	10	12	24	14	17						
\$600,000 - \$699,999	52	1.18%	5	4	9	8	13	13						
\$700,000 - \$799,999	33	0.75%	4	4	1	4	10	10						
\$800,000 - \$899,999	18	0.41%	1	2	3	5	4	3						
\$900,000 - \$999,999	19	0.43%	1	1	4	4	6	3						
Over \$1,000,000	48	1.09%	4	5	10	11	9	9						
2011 Totals	4,402	-	595	629	845	793	754	786						

Single Family Sales Median Price Comparison



2011 June Single Family Sales - Price Class Analysis

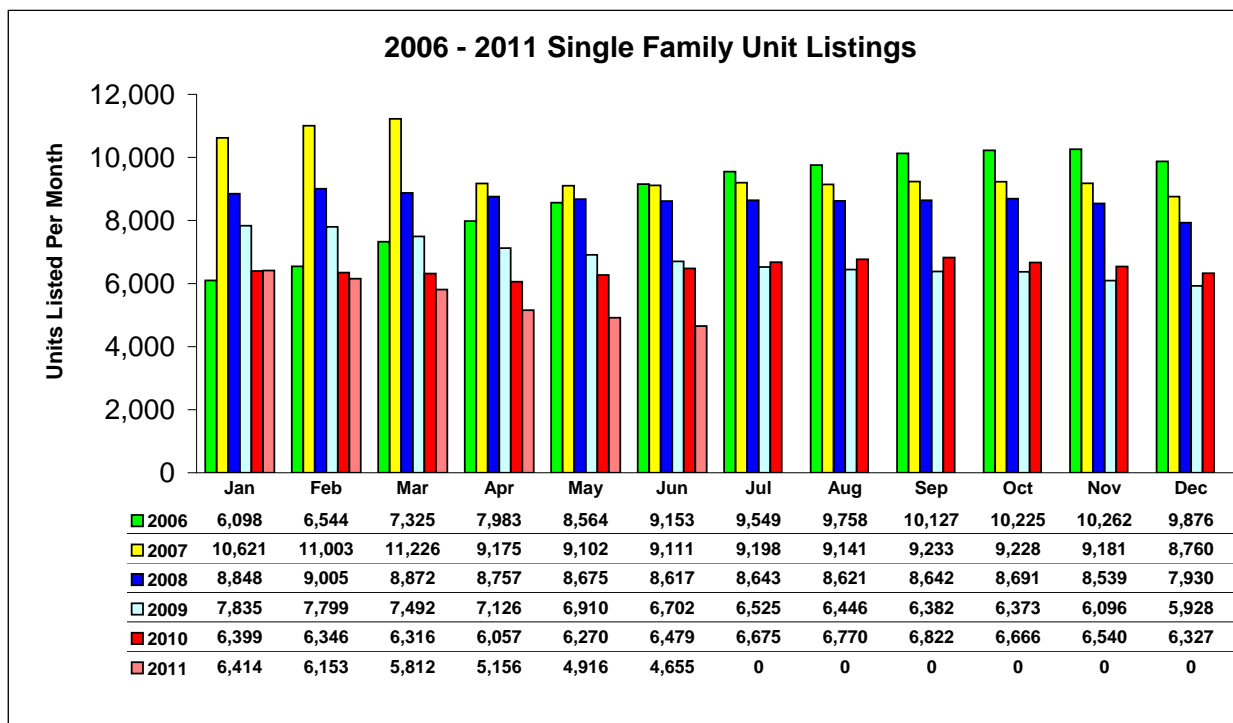


2011 Single Family Unit Listings

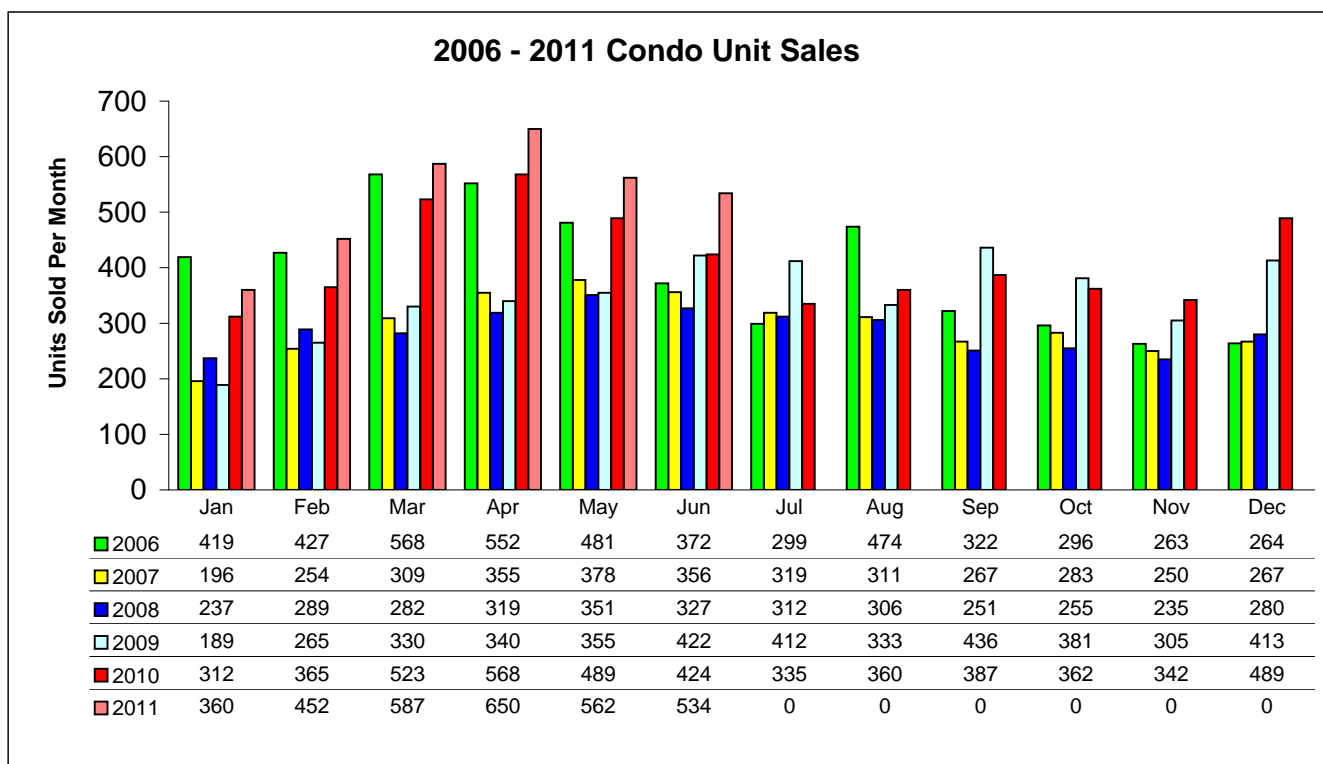
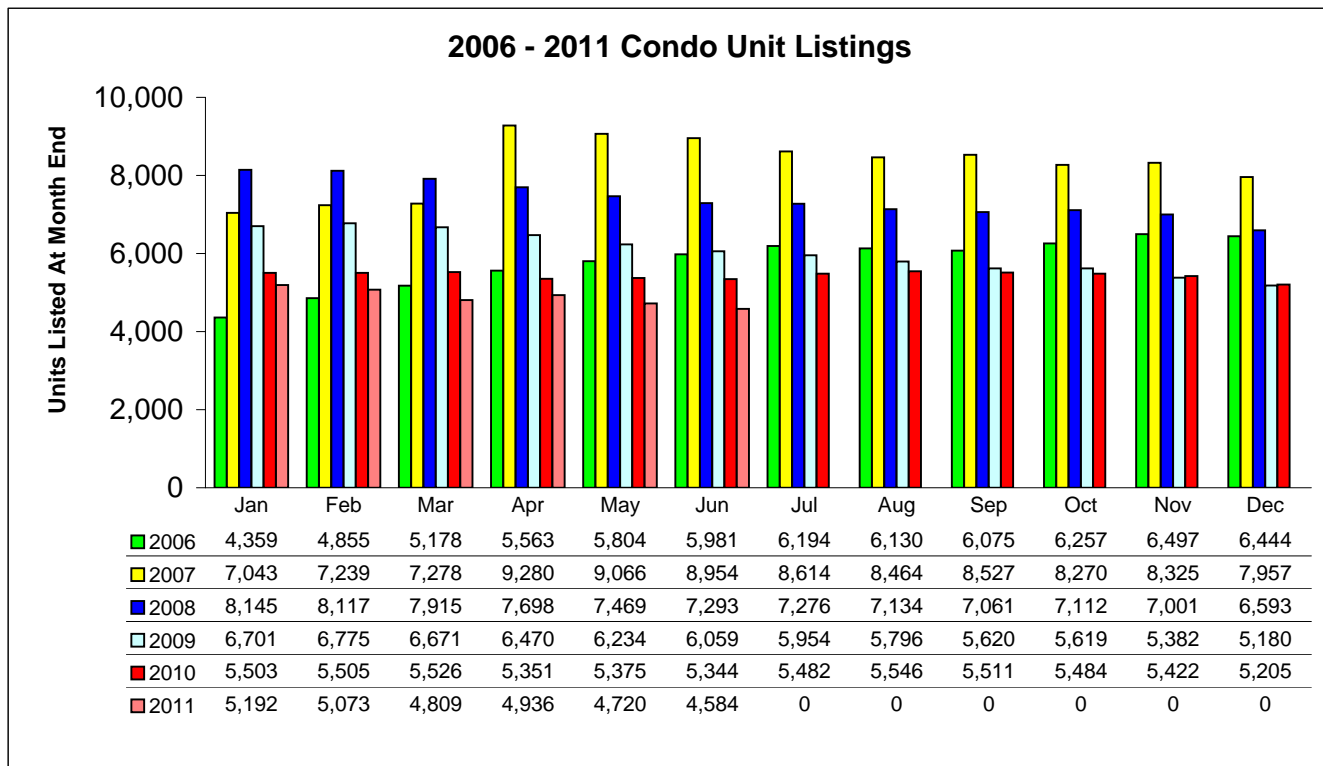
Single Family MTD	YTD Total		Jan	Feb	Mar	Apr	May	Jun	Jul	Aug	Sep	Oct	Nov	Dec
Previous Year (2010)	77,667	Units	6,399	6,346	6,316	6,057	6,270	6,479	6,675	6,770	6,822	6,666	6,540	6,327
		% of YTD	8.2%	8.2%	8.1%	7.8%	8.1%	8.3%	8.6%	8.7%	8.8%	8.6%	8.4%	8.1%
Current Year (2011)	33,106	Units	6,414	6,153	5,812	5,156	4,916	4,655						
		% Change	0.2%	-3.0%	-8.0%	-14.9%	-21.6%	-28.2%						

Single Family YTD	MTD Total		Jan	Feb	Mar	Apr	May	Jun	Jul	Aug	Sep	Oct	Nov	Dec
2010 MTD	37,867	Units	6,399	12,745	19,061	25,118	31,388	37,867	44,542	51,312	58,134	64,800	71,340	77,667
2011 MTD	33,106	Units	6,414	12,567	18,379	23,535	28,451	33,106						
% Change 2011 MTD	-12.6%		0.2%	-1.4%	-3.6%	-6.3%	-9.4%	-12.6%						

Single Family Unit Listings			Jan	Feb	Mar	Apr	May	Jun	Jul	Aug	Sep	Oct	Nov	Dec
Price Class	YTD Total	% of YTD												
\$29,999 or under	701	2.12%	156	135	124	100	101	85						
\$30,000 - \$39,999	690	2.08%	138	141	132	102	87	90						
\$40,000 - \$49,999	1,030	3.11%	240	215	195	134	128	118						
\$50,000 - \$59,999	1,070	3.23%	228	227	208	148	128	131						
\$60,000 - \$69,999	1,412	4.27%	309	290	267	197	184	165						
\$70,000 - \$79,999	1,423	4.30%	323	287	244	191	197	181						
\$80,000 - \$89,999	1,247	3.77%	237	236	223	188	200	163						
\$90,000 - \$99,999	1,484	4.48%	278	270	258	241	222	215						
\$100,000 - \$119,999	2,238	6.76%	427	411	392	358	323	327						
\$120,000 - \$139,999	2,746	8.29%	570	535	496	419	392	334						
\$140,000 - \$159,999	2,204	6.66%	418	385	389	351	321	340						
\$160,000 - \$179,999	1,792	5.41%	338	323	291	270	294	276						
\$180,000 - \$199,999	1,437	4.34%	290	263	243	222	223	196						
\$200,000 - \$249,999	2,443	7.38%	466	455	446	391	352	333						
\$250,000 - \$299,999	1,919	5.80%	349	333	325	308	309	295						
\$300,000 - \$399,999	2,389	7.22%	448	420	403	397	362	359						
\$400,000 - \$499,999	1,661	5.02%	274	293	282	277	269	266						
\$500,000 - \$599,999	1,080	3.26%	182	183	199	188	175	153						
\$600,000 - \$699,999	781	2.36%	142	142	126	126	119	126						
\$700,000 - \$799,999	576	1.74%	100	104	109	95	82	86						
\$800,000 - \$899,999	508	1.53%	92	96	88	86	81	65						
\$900,000 - \$999,999	341	1.03%	68	68	58	48	53	46						
Over \$1,000,000	1,934	5.84%	341	341	314	319	314	305						
2011 Totals	33,106		6,414	6,153	5,812	5,156	4,916	4,655						



Condo Listing and Sales Comparison By Unit



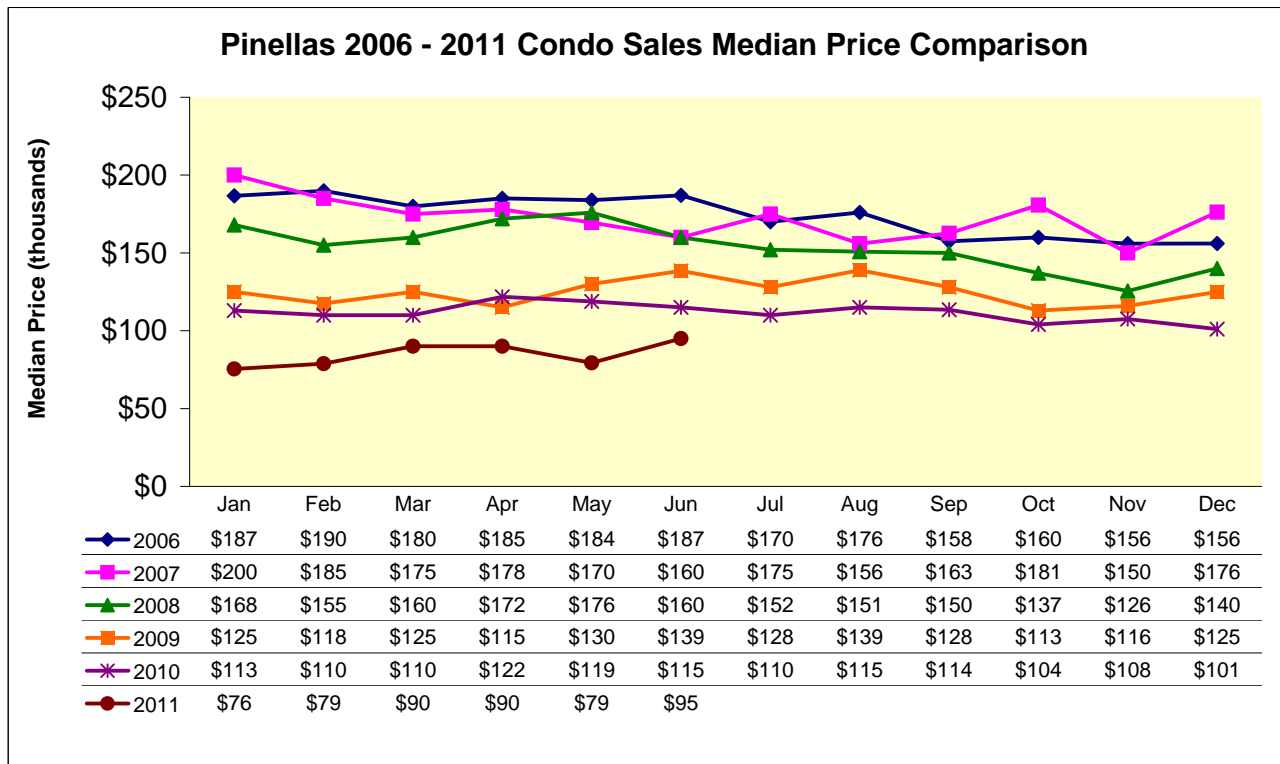
2011 Condo Unit Sales

MTD Comparisons		YTD Total	Jan	Feb	Mar	Apr	May	Jun	Jul	Aug	Sep	Oct	Nov	Dec
2010 Units	4,956	Units	312	365	523	568	489	424	335	360	387	362	342	489
		% of YTD	6.3%	7.4%	10.6%	11.5%	9.9%	8.6%	6.8%	7.3%	7.8%	7.3%	6.9%	9.9%
2011 Units	3,145	Units	360	452	587	650	562	534						
		% Change	15.4%	23.8%	12.2%	14.4%	14.9%	25.9%						
2010 Median Price	(thousands)		\$113.0	\$110.0	\$110.0	\$121.8	\$118.8	\$115.0	\$110.0	\$115.0	\$113.5	\$104.0	\$107.5	\$101.0
2011 Median Price			\$75.5	\$78.8	\$90.0	\$90.0	\$79.4	\$95.0						
		% Change	-33.2%	-28.4%	-18.2%	-26.1%	-33.2%	-17.4%						
2010 Mean Price	(thousands)		\$158.3	\$160.1	\$198.1	\$195.8	\$178.5	\$181.1	\$192.8	\$175.8	\$168.7	\$172.6	\$160.5	\$166.9
2011 Mean Price			\$136.7	\$136.6	\$152.6	\$151.3	\$143.6	\$152.7						
		% Change	-13.6%	-14.7%	-23.0%	-22.7%	-19.6%	-15.7%						

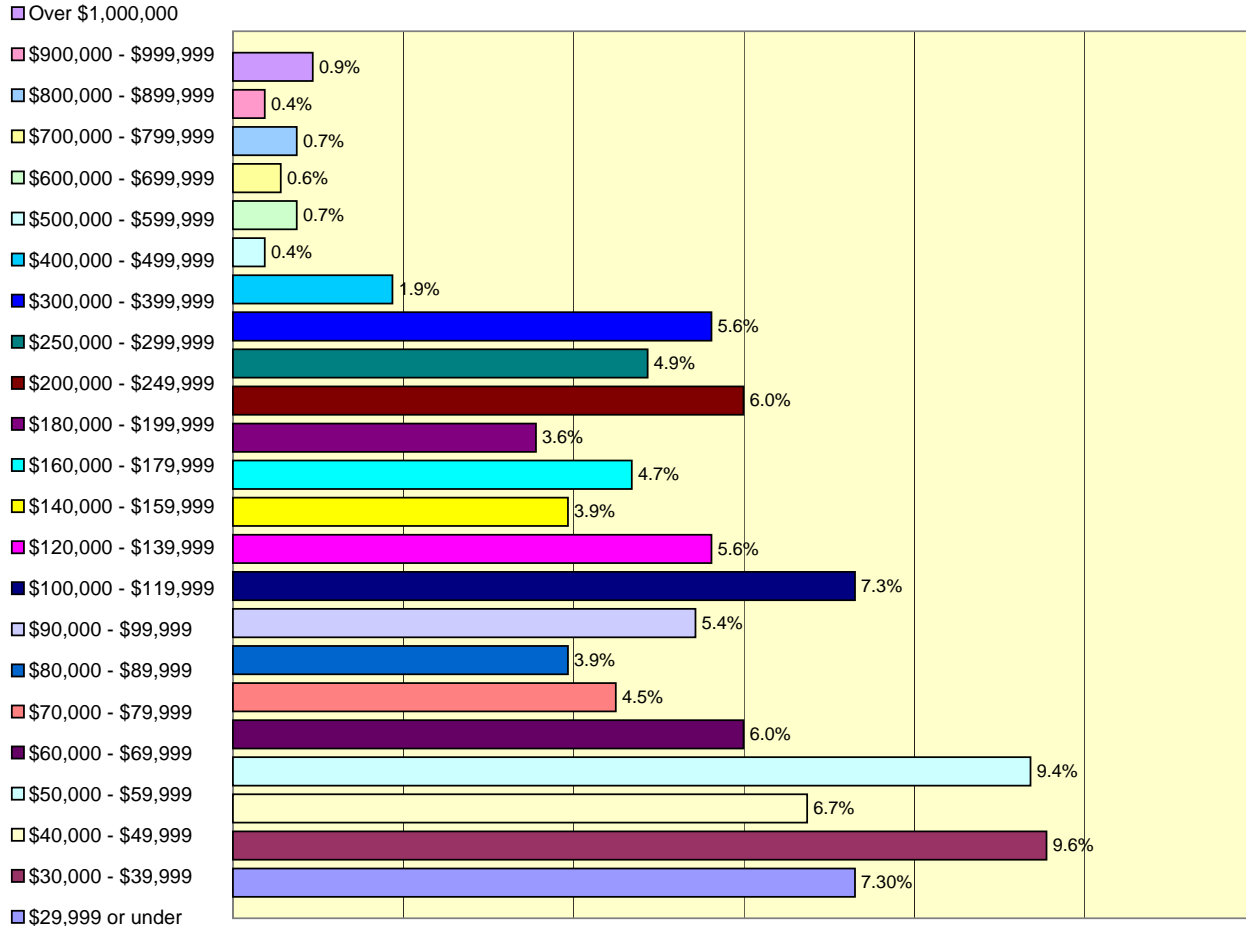
YTD Comparisons		MTD Total	Jan	Feb	Mar	Apr	May	Jun	Jul	Aug	Sep	Oct	Nov	Dec
2010 MTD	2,681	Units	312	677	1,200	1,768	2,257	2,681	3,016	3,376	3,763	4,125	4,467	4,956
2011 MTD	3,145	Units	360	812	1,399	2,049	2,611	3,145						
% Change 2011 MTD	17.3%		15.4%	19.9%	16.6%	15.9%	15.7%	17.3%						

Condo Unit Sales			Jan	Feb	Mar	Apr	May	Jun	Jul	Aug	Sep	Oct	Nov	Dec
Price Class	YTD Total	% of YTD												
\$29,999 or under	343	10.91%	41	61	66	64	72	39						
\$30,000 - \$39,999	247	7.85%	36	33	47	41	39	51						
\$40,000 - \$49,999	246	7.82%	35	45	34	45	51	36						
\$50,000 - \$59,999	274	8.71%	33	39	48	45	59	50						
\$60,000 - \$69,999	200	6.36%	23	22	29	52	42	32						
\$70,000 - \$79,999	166	5.28%	17	28	41	38	18	24						
\$80,000 - \$89,999	139	4.42%	12	23	26	37	20	21						
\$90,000 - \$99,999	114	3.62%	16	12	11	21	25	29						
\$100,000 - \$119,999	166	5.28%	21	28	30	25	23	39						
\$120,000 - \$139,999	174	5.53%	10	22	41	48	23	30						
\$140,000 - \$159,999	133	4.23%	12	17	35	27	21	21						
\$160,000 - \$179,999	146	4.64%	11	23	25	33	29	25						
\$180,000 - \$199,999	93	2.96%	10	7	12	22	23	19						
\$200,000 - \$249,999	197	6.26%	20	26	36	49	34	32						
\$250,000 - \$299,999	131	4.17%	19	17	31	23	15	26						
\$300,000 - \$399,999	180	5.72%	25	23	41	32	29	30						
\$400,000 - \$499,999	70	2.23%	8	8	10	23	11	10						
\$500,000 - \$599,999	35	1.11%	5	7	5	6	10	2						
\$600,000 - \$699,999	31	0.99%	3	3	7	7	7	4						
\$700,000 - \$799,999	21	0.67%	1	4	6	5	2	3						
\$800,000 - \$899,999	10	0.32%	0	1	1	1	3	4						
\$900,000 - \$999,999	7	0.22%	0	0	0	2	3	2						
Over \$1,000,000	22	0.70%	2	3	5	4	3	5						
2011 Totals	3,145	-	360	452	587	650	562	534						

Condo Sales Median Price Comparison



2011 June Condo Sales - Price Class Analysis

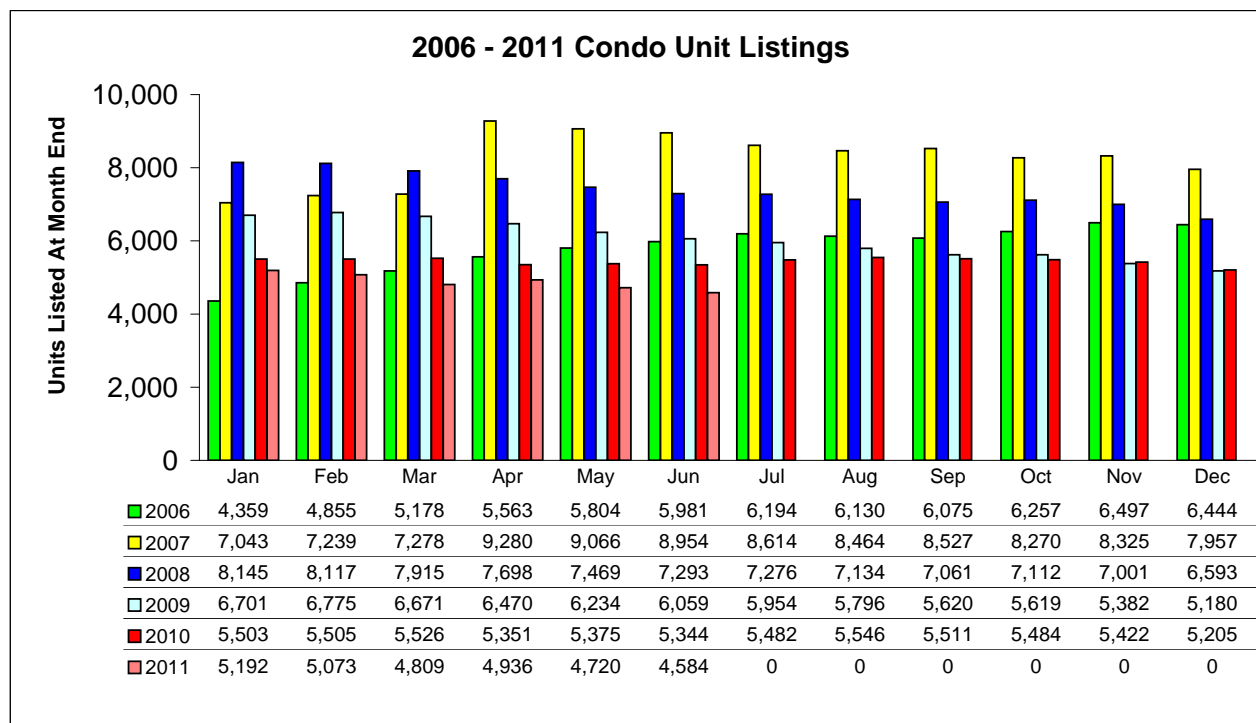


2011 Condo Unit Listings

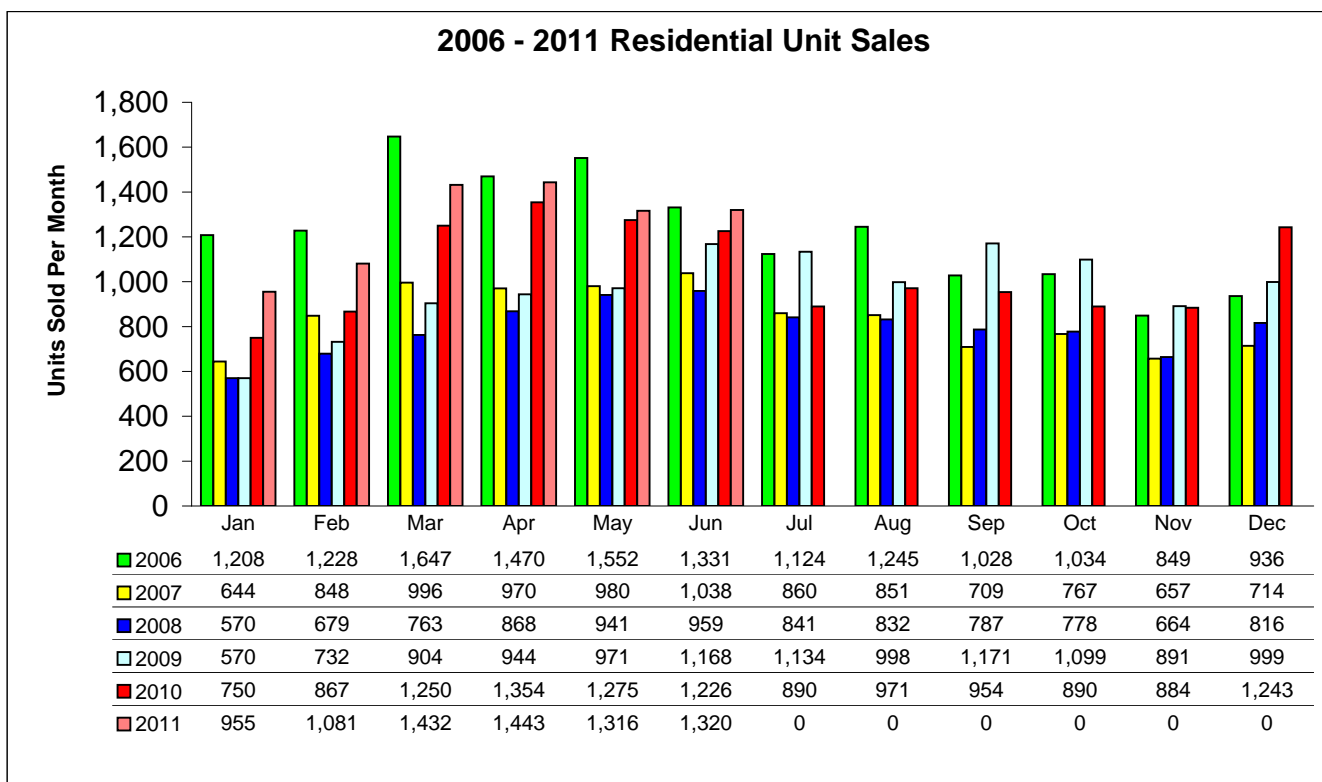
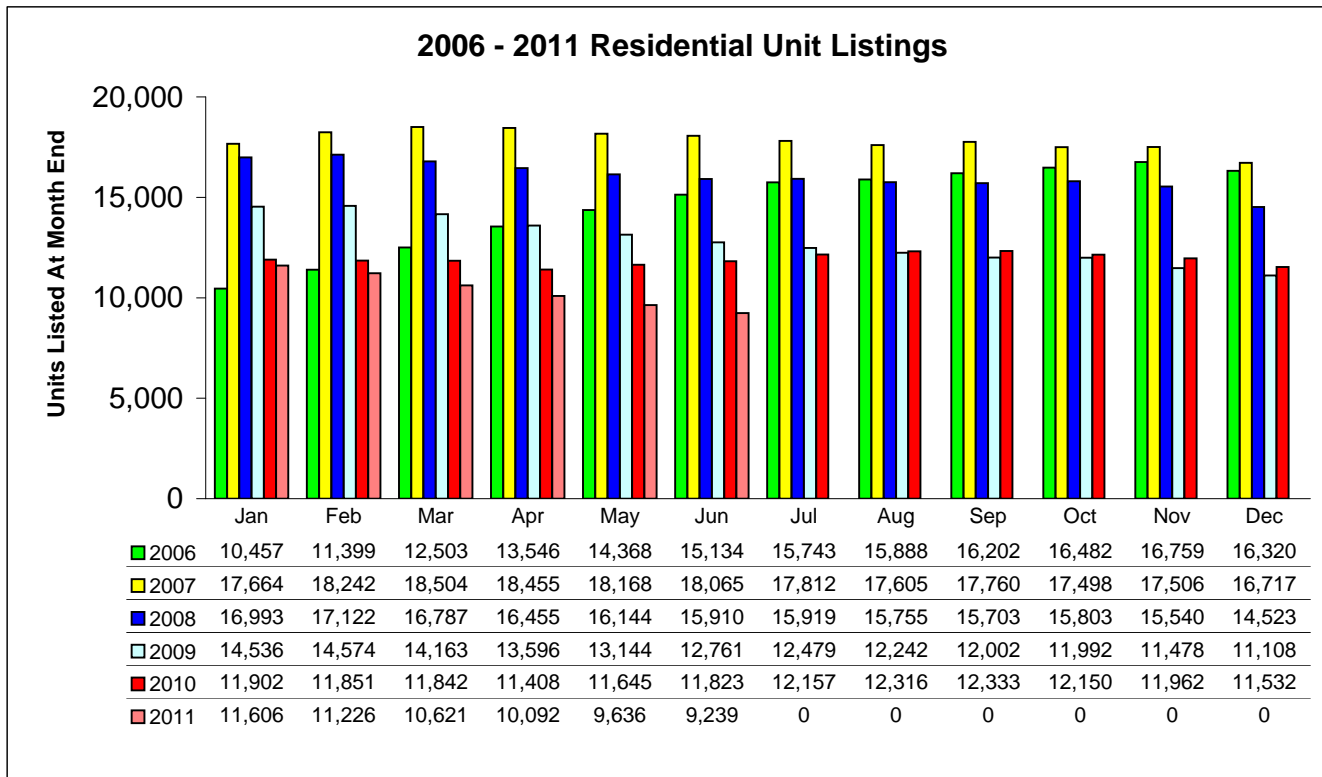
Condo MTD		YTD Total	Jan	Feb	Mar	Apr	May	Jun	Jul	Aug	Sep	Oct	Nov	Dec
Previous Year (2010)	65,254	Units	5,503	5,505	5,526	5,351	5,375	5,344	5,482	5,546	5,511	5,484	5,422	5,205
		% of YTD	8.4%	8.4%	8.5%	8.2%	8.2%	8.2%	8.4%	8.5%	8.4%	8.4%	8.3%	8.0%
Current Year (2011)	29,314	Units	5,192	5,073	4,809	4,936	4,720	4,584						
		% Change	-5.7%	-7.8%	-13.0%	-7.8%	-12.2%	-14.2%						

Condo YTD		MTD Total	Jan	Feb	Mar	Apr	May	Jun	Jul	Aug	Sep	Oct	Nov	Dec
2010 MTD	32,604	Units	5,503	11,008	16,534	21,885	27,260	32,604	38,086	43,632	49,143	54,627	60,049	65,254
2011 MTD	29,314	Units	5,192	10,265	15,074	20,010	24,730	29,314						
% Change 2011 MTD	-10.1%		-5.7%	-6.7%	-8.8%	-8.6%	-9.3%	-10.1%						

Condo Unit Listings														
Price Class	YTD Total	% of YTD	Jan	Feb	Mar	Apr	May	Jun	Jul	Aug	Sep	Oct	Nov	Dec
\$29,999 or under	1,226	4.18%	197	193	187	218	217	214						
\$30,000 - \$39,999	1,364	4.65%	224	230	224	237	225	224						
\$40,000 - \$49,999	1,702	5.81%	307	286	270	297	272	270						
\$50,000 - \$59,999	1,831	6.25%	305	301	304	328	300	293						
\$60,000 - \$69,999	1,733	5.91%	292	272	253	304	309	303						
\$70,000 - \$79,999	2,118	7.23%	325	392	344	367	347	343						
\$80,000 - \$89,999	1,576	5.38%	271	258	259	276	261	251						
\$90,000 - \$99,999	1,282	4.37%	252	236	210	204	193	187						
\$100,000 - \$119,999	1,915	6.53%	326	317	319	334	323	296						
\$120,000 - \$139,999	1,961	6.69%	376	353	315	320	302	295						
\$140,000 - \$159,999	1,319	4.50%	255	229	218	200	215	202						
\$160,000 - \$179,999	1,328	4.53%	237	228	215	227	214	207						
\$180,000 - \$199,999	1,107	3.78%	214	207	178	171	166	171						
\$200,000 - \$249,999	1,874	6.39%	325	333	310	311	299	296						
\$250,000 - \$299,999	1,727	5.89%	329	322	288	276	262	250						
\$300,000 - \$399,999	1,964	6.70%	370	330	340	322	304	298						
\$400,000 - \$499,999	1,040	3.55%	183	186	189	179	158	145						
\$500,000 - \$599,999	635	2.17%	117	111	109	101	100	97						
\$600,000 - \$699,999	390	1.33%	64	73	67	64	62	60						
\$700,000 - \$799,999	284	0.97%	58	54	45	43	43	41						
\$800,000 - \$899,999	211	0.72%	36	31	36	38	35	35						
\$900,000 - \$999,999	101	0.34%	16	18	22	17	15	13						
Over \$1,000,000	626	2.14%	113	113	107	102	98	93						
2011 Totals	29,314		5,192	5,073	4,809	4,936	4,720	4,584						



Residential Listing and Sales Comparison By Unit
Combined Single Family and Condo Data



2011 Residential Unit Sales

MTD Comparisons		YTD Total	Jan	Feb	Mar	Apr	May	Jun	Jul	Aug	Sep	Oct	Nov	Dec
2010 Units	12,554	Units	750	867	1,250	1,354	1,275	1,226	890	971	954	890	884	1,243
		% of YTD	6.0%	6.9%	10.0%	10.8%	10.2%	9.8%	7.1%	7.7%	7.6%	7.1%	7.0%	9.9%
2011 Units	7,547	Units	955	1,081	1,432	1,443	1,316	1,320						
		% Change	27.3%	24.7%	14.6%	6.6%	3.2%	7.7%						

YTD Comparisons		MTD Total	Jan	Feb	Mar	Apr	May	Jun	Jul	Aug	Sep	Oct	Nov	Dec
2010 MTD	6,722	Units	750	1,617	2,867	4,221	5,496	6,722	7,612	8,583	9,537	10,427	11,311	12,554
2011 MTD	7,547	Units	955	2,036	3,468	4,911	6,227	7,547						
% Change 2011 MTD	12.3%		27.3%	25.9%	21.0%	16.3%	13.3%	12.3%						

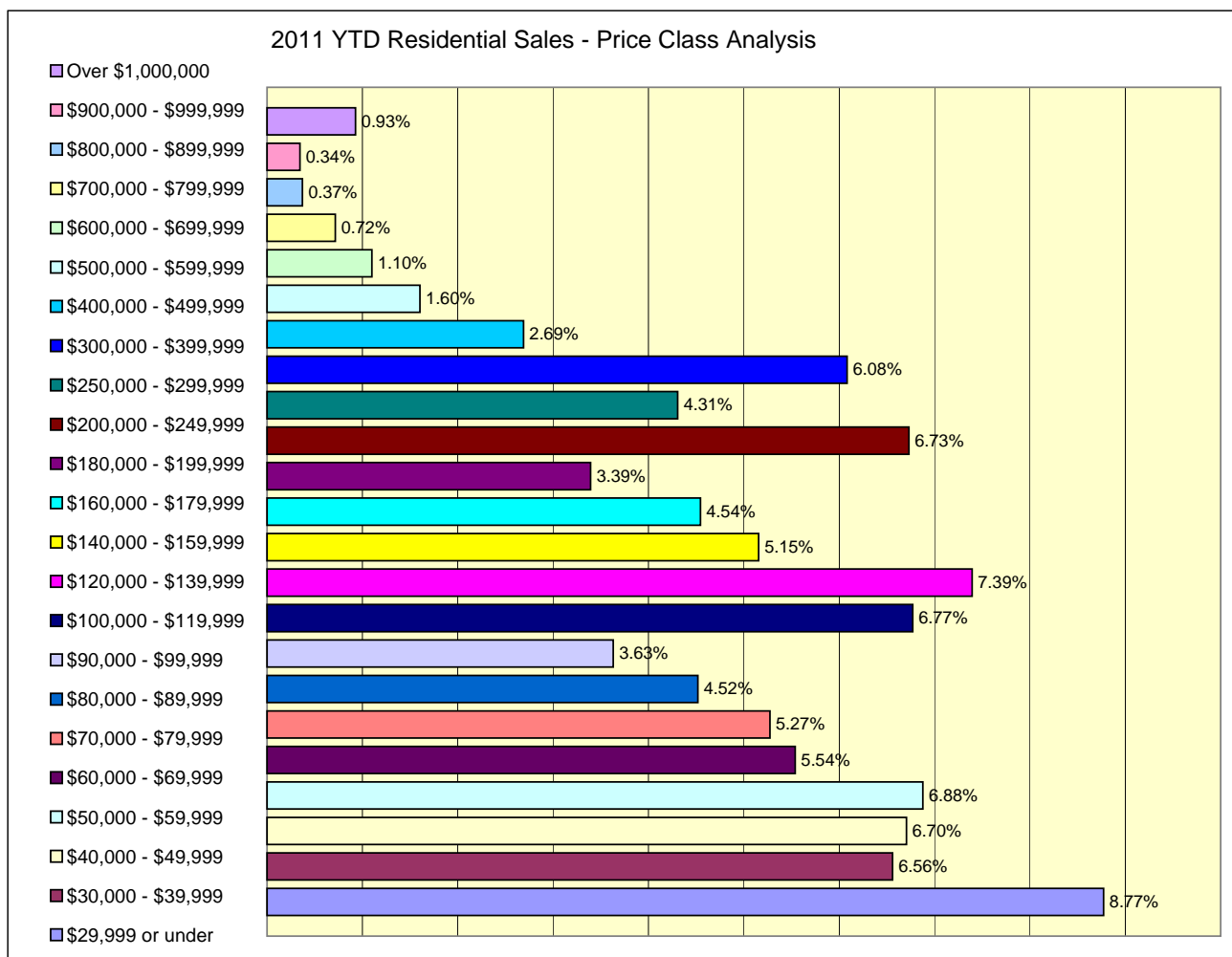
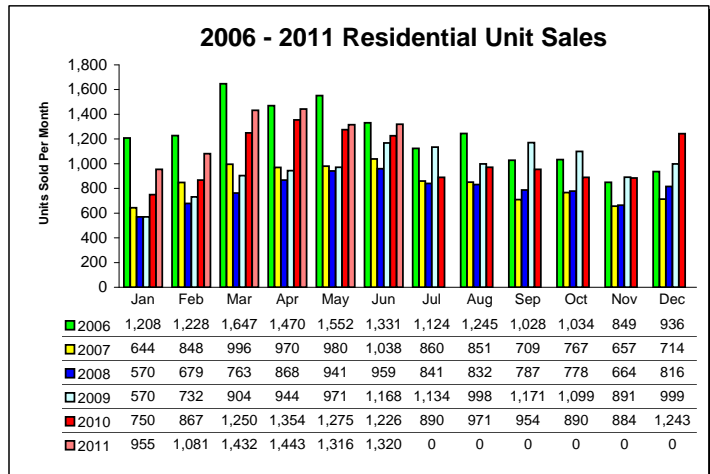
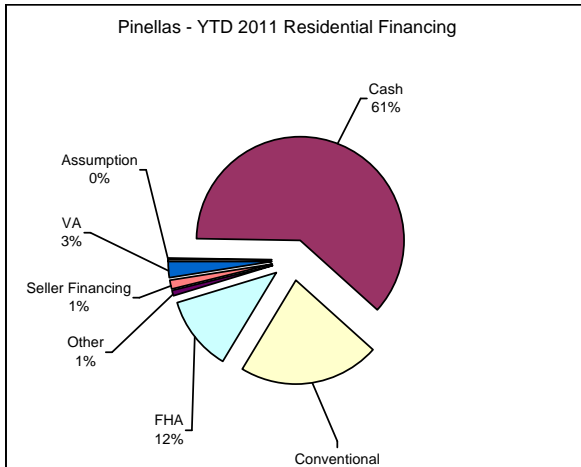
2011 Price		Jan	Feb	Mar	Apr	May	Jun	Jul	Aug	Sep	Oct	Nov	Dec
Median Sales Price	thousands	89.0	89.0	108.0	116.3	100.5	120.0						
Mean Sales Price	thousands	155.4	149.5	165.7	175.0	165.3	177.8						

Residential Sales			Jan	Feb	Mar	Apr	May	Jun	Jul	Aug	Sep	Oct	Nov	Dec
Price Class	YTD Total	% of YTD												
\$29,999 or under	662	8.77%	86	117	120	114	152	73						
\$30,000 - \$39,999	495	6.56%	82	74	107	77	71	84						
\$40,000 - \$49,999	506	6.70%	89	91	81	87	92	66						
\$50,000 - \$59,999	519	6.88%	77	77	97	76	103	89						
\$60,000 - \$69,999	418	5.54%	54	64	74	88	65	73						
\$70,000 - \$79,999	398	5.27%	55	62	91	76	64	50						
\$80,000 - \$89,999	341	4.52%	35	56	67	69	58	56						
\$90,000 - \$99,999	274	3.63%	33	35	41	52	46	67						
\$100,000 - \$119,999	511	6.77%	58	73	97	99	88	96						
\$120,000 - \$139,999	558	7.39%	50	66	108	124	86	124						
\$140,000 - \$159,999	389	5.15%	49	48	85	68	64	75						
\$160,000 - \$179,999	343	4.54%	32	51	68	72	65	55						
\$180,000 - \$199,999	256	3.39%	29	27	45	52	49	54						
\$200,000 - \$249,999	508	6.73%	63	69	86	108	83	99						
\$250,000 - \$299,999	325	4.31%	41	42	66	61	47	68						
\$300,000 - \$399,999	459	6.08%	60	58	100	89	67	85						
\$400,000 - \$499,999	203	2.69%	27	27	36	50	32	31						
\$500,000 - \$599,999	121	1.60%	14	17	17	30	24	19						
\$600,000 - \$699,999	83	1.10%	8	7	16	15	20	17						
\$700,000 - \$799,999	54	0.72%	5	8	7	9	12	13						
\$800,000 - \$899,999	28	0.37%	1	3	4	6	7	7						
\$900,000 - \$999,999	26	0.34%	1	1	4	6	9	5						
Over \$1,000,000	70	0.93%	6	8	15	15	12	14						
2011 Totals	7,547	-	955	1,081	1,432	1,443	1,316	1,320						

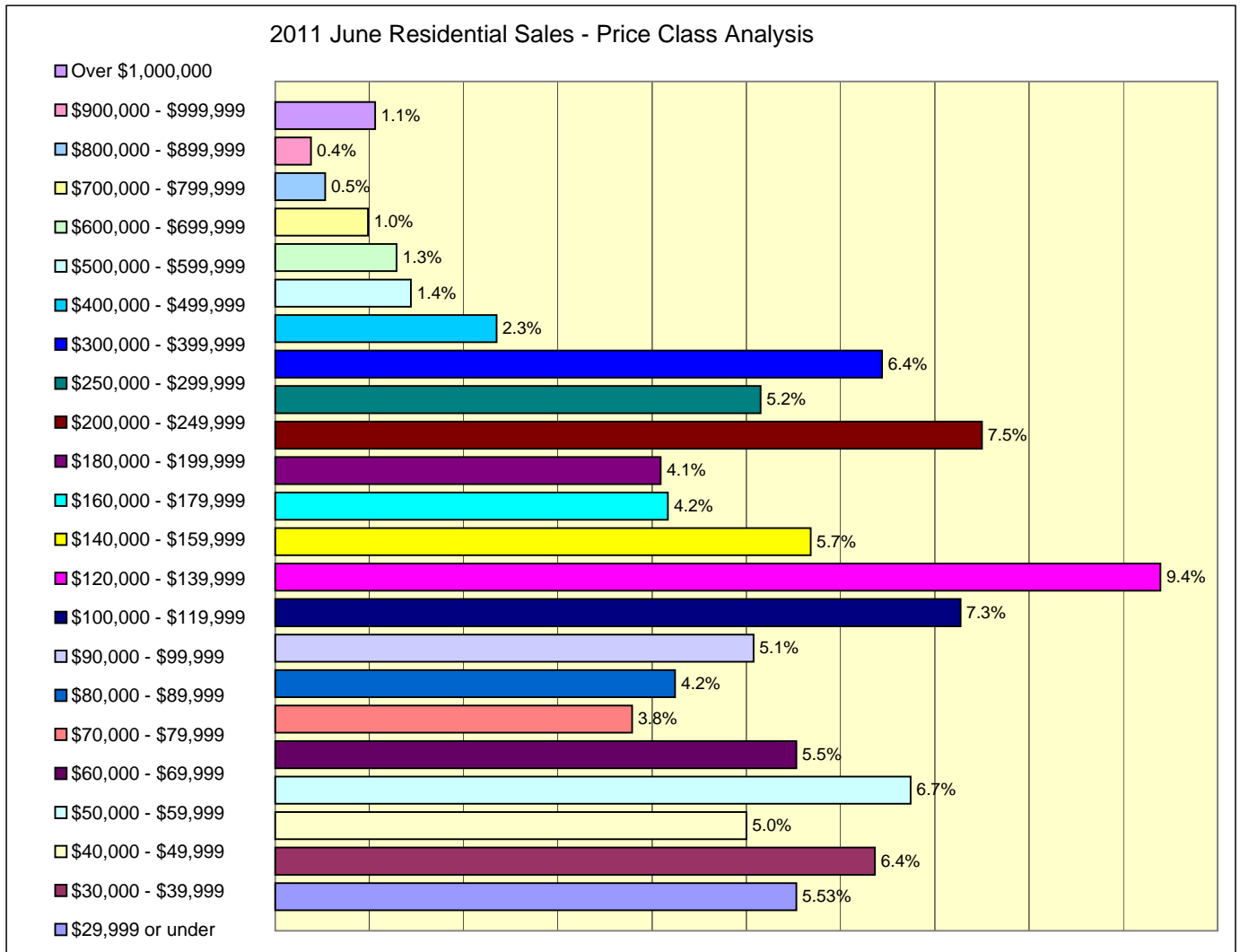
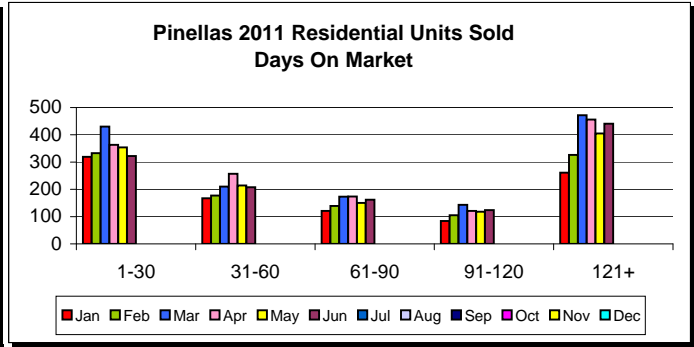
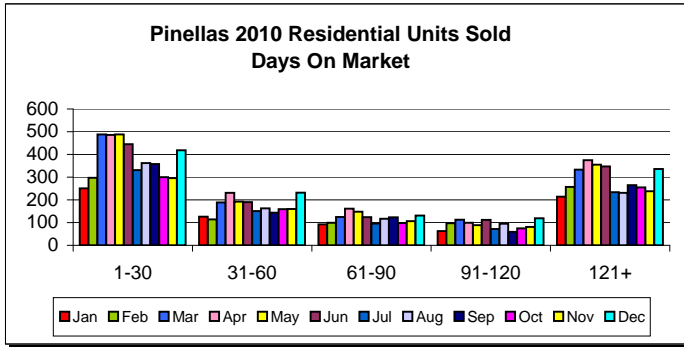
Days On Market		% of YTD	Jan	Feb	Mar	Apr	May	Jun	Jul	Aug	Sep	Oct	Nov	Dec
1-30	2,121	28.94%	319	333	430	363	354	322	0	0	0	0		
31-60	1,233	16.82%	167	177	210	257	214	208	0	0	0	0		
61-90	919	12.54%	121	139	173	174	150	162	0	0	0	0		
91-120	695	9.48%	84	105	143	121	118	124	0	0	0	0		
121-180	987	13.47%	120	140	203	190	164	170	0	0	0	0		
180+	1,374	18.75%	141	186	269	266	241	271	0	0	0	0		

Financing		% of YTD	Jan	Feb	Mar	Apr	May	Jun	Jul	Aug	Sep	Oct	Nov	Dec
Assumption	22	0.30%	0	5	3	5	3	6	0	0	0	0		
Cash	4,583	61.47%	624	705	911	829	803	711	0	0	0	0		
Conventional	1,631	21.88%	195	208	290	328	283	327	0	0	0	0		
FHA	868	11.64%	93	102	151	185	155	182	0	0	0	0		
Other	69	0.93%	10	22	11	7	7	12	0	0	0	0		
Seller Financing	90	1.21%	10	14	18	18	15	15	0	0	0	0		
VA	193	2.59%	17	17	36	43	39	41	0	0	0	0		

Based on information compiled on the 5th of the month
(or the next business day if the 5th is on a weekend).



Pinellas Realtor Organization - PRO - Suncoast MLS
 Data reported here represents the combined Single Family and Condominium/Co-op Sales. The reported sales for the former Greater Clearwater Association of REALTORS (GCAR) and the St Petersburg Suncoast Association of REALTORS (SSAR) have been combined and averages calculated where appropriate for trend comparisons.
 Reported sales are dependent upon timeliness of sales and totality of information reported by participants. The data reflects only the sales published through the Pinellas Realtor Organization MLS and does not include all sales in the reported areas. Neither PRO nor the Suncoast MLS is in any way responsible for its accuracy.



2011 Combined Listings

Residential MTD			YTD Total	Jan	Feb	Mar	Apr	May	Jun	Jul	Aug	Sep	Oct	Nov	Dec
2010 Units	142,921	Units		11,902	11,851	11,842	11,408	11,645	11,823	12,157	12,316	12,333	12,150	11,962	11,532
		% of YTD		8.3%	8.3%	8.3%	8.0%	8.1%	8.3%	8.5%	8.6%	8.6%	8.5%	8.4%	8.1%
2011 Units	62,420	Units		11,606	11,226	10,621	10,092	9,636	9,239						
		% Change		-2.5%	-5.3%	-10.3%	-11.5%	-17.3%	-21.9%						

Residential YTD			MTD Total	Jan	Feb	Mar	Apr	May	Jun	Jul	Aug	Sep	Oct	Nov	Dec
2010 MTD	70,471	Units		11,902	23,753	35,595	47,003	58,648	70,471	82,628	94,944	107,277	119,427	131,389	142,921
2011 MTD	62,420	Units		11,606	22,832	33,453	43,545	53,181	62,420						
% Change 2011 MTD	-11.4%			-2.5%	-3.9%	-6.0%	-7.4%	-9.3%	-11.4%						

Residential Listings				Jan	Feb	Mar	Apr	May	Jun	Jul	Aug	Sep	Oct	Nov	Dec
Price Class	YTD Total	% of YTD													
\$29,999 or under	1,927	3.09%		353	328	311	318	318	299						
\$30,000 - \$39,999	2,054	3.29%		362	371	356	339	312	314						
\$40,000 - \$49,999	2,732	4.38%		547	501	465	431	400	388						
\$50,000 - \$59,999	2,901	4.65%		533	528	512	476	428	424						
\$60,000 - \$69,999	3,145	5.04%		601	562	520	501	493	468						
\$70,000 - \$79,999	3,541	5.67%		648	679	588	558	544	524						
\$80,000 - \$89,999	2,823	4.52%		508	494	482	464	461	414						
\$90,000 - \$99,999	2,766	4.43%		530	506	468	445	415	402						
\$100,000 - \$119,999	4,153	6.65%		753	728	711	692	646	623						
\$120,000 - \$139,999	4,707	7.54%		946	888	811	739	694	629						
\$140,000 - \$159,999	3,523	5.64%		673	614	607	551	536	542						
\$160,000 - \$179,999	3,120	5.00%		575	551	506	497	508	483						
\$180,000 - \$199,999	2,544	4.08%		504	470	421	393	389	367						
\$200,000 - \$249,999	4,317	6.92%		791	788	756	702	651	629						
\$250,000 - \$299,999	3,646	5.84%		678	655	613	584	571	545						
\$300,000 - \$399,999	4,353	6.97%		818	750	743	719	666	657						
\$400,000 - \$499,999	2,701	4.33%		457	479	471	456	427	411						
\$500,000 - \$599,999	1,715	2.75%		299	294	308	289	275	250						
\$600,000 - \$699,999	1,171	1.88%		206	215	193	190	181	186						
\$700,000 - \$799,999	860	1.38%		158	158	154	138	125	127						
\$800,000 - \$899,999	719	1.15%		128	127	124	124	116	100						
\$900,000 - \$999,999	442	0.71%		84	86	80	65	68	59						
Over \$1,000,000	2,560	4.10%		454	454	421	421	412	398						
2011 Totals	62,420	-		11,606	11,226	10,621	10,092	9,636	9,239						

