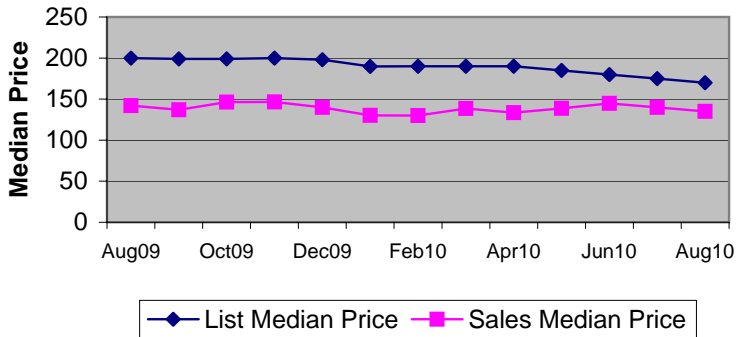
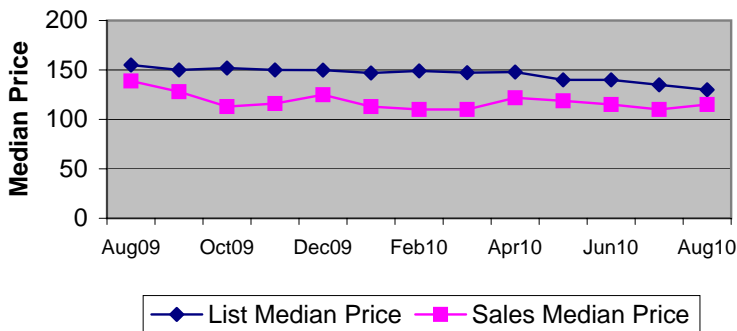


Residential Sales and Listing Analysis

2010 Single Family List Price to Sale Price



2010 Condo List Price to Sale Price



Listings By Price Class

Price Class	SF	Condo
\$29,999 or under	115	156
\$30,000 - \$39,999	122	197
\$40,000 - \$49,999	181	310
\$50,000 - \$59,999	208	316
\$60,000 - \$69,999	264	293
\$70,000 - \$79,999	295	294
\$80,000 - \$89,999	286	328
\$90,000 - \$99,999	313	277
\$100,000 - \$119,999	443	391
\$120,000 - \$139,999	548	377
\$140,000 - \$159,999	460	264
\$160,000 - \$179,999	406	250
\$180,000 - \$199,999	358	242
\$200,000 - \$249,999	522	399
\$250,000 - \$299,999	382	343
\$300,000 - \$399,999	480	421
\$400,000 - \$499,999	335	237
\$500,000 - \$599,999	217	134
\$600,000 - \$699,999	172	79
\$700,000 - \$799,999	112	74
\$800,000 - \$899,999	90	38
\$900,000 - \$999,999	76	19
Over \$1,000,000	385	107
Totals	6,770	5,546
Median (thousands)	169.9	130
Average (thousands):	336.7	219.7

Absorption Rate**

	Single Family				Condo			
	2007	2008	2009	2010	2007	2008	2009	2010
Jan	4.2%	3.8%	4.9%	6.8%	2.8%	2.9%	2.8%	5.7%
Feb	5.4%	4.3%	6.0%	7.9%	3.5%	3.6%	3.9%	6.6%
Mar	6.1%	5.4%	7.7%	11.5%	4.2%	3.6%	4.9%	9.5%
Apr	6.7%	6.3%	8.5%	13.0%	3.8%	4.1%	5.3%	10.6%
May	6.6%	6.8%	8.9%	12.5%	4.2%	4.7%	5.7%	9.1%
Jun	7.5%	7.3%	11.1%	12.4%	4.0%	4.5%	7.0%	7.9%
Jul	5.9%	6.1%	11.1%	8.3%	3.7%	4.3%	6.9%	6.1%
Aug	5.9%	6.1%	10.3%	9.0%	3.7%	4.3%	5.7%	6.5%
Sep	4.8%	6.2%	11.5%		3.1%	3.6%	7.8%	
Oct	5.2%	6.0%	11.3%		3.4%	3.6%	6.8%	
Nov	4.4%	5.0%	9.6%		3.0%	3.4%	5.7%	
Dec	5.1%	6.8%	9.9%		3.4%	4.2%	8.0%	

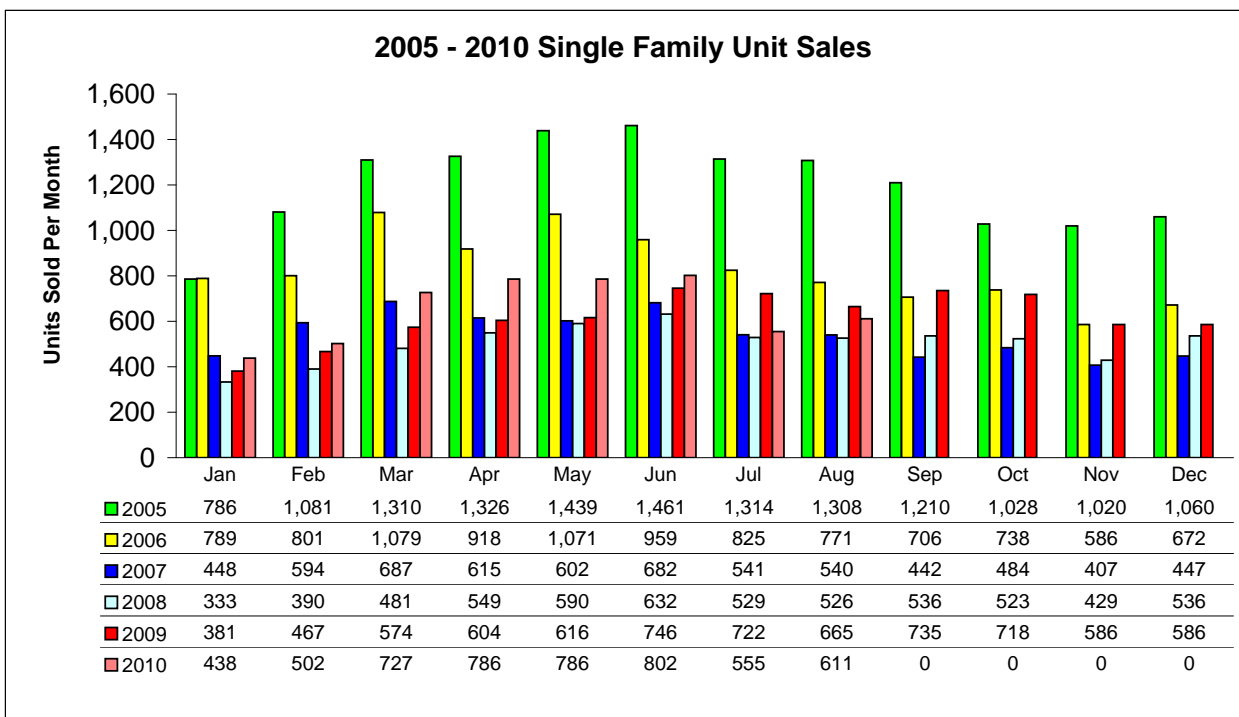
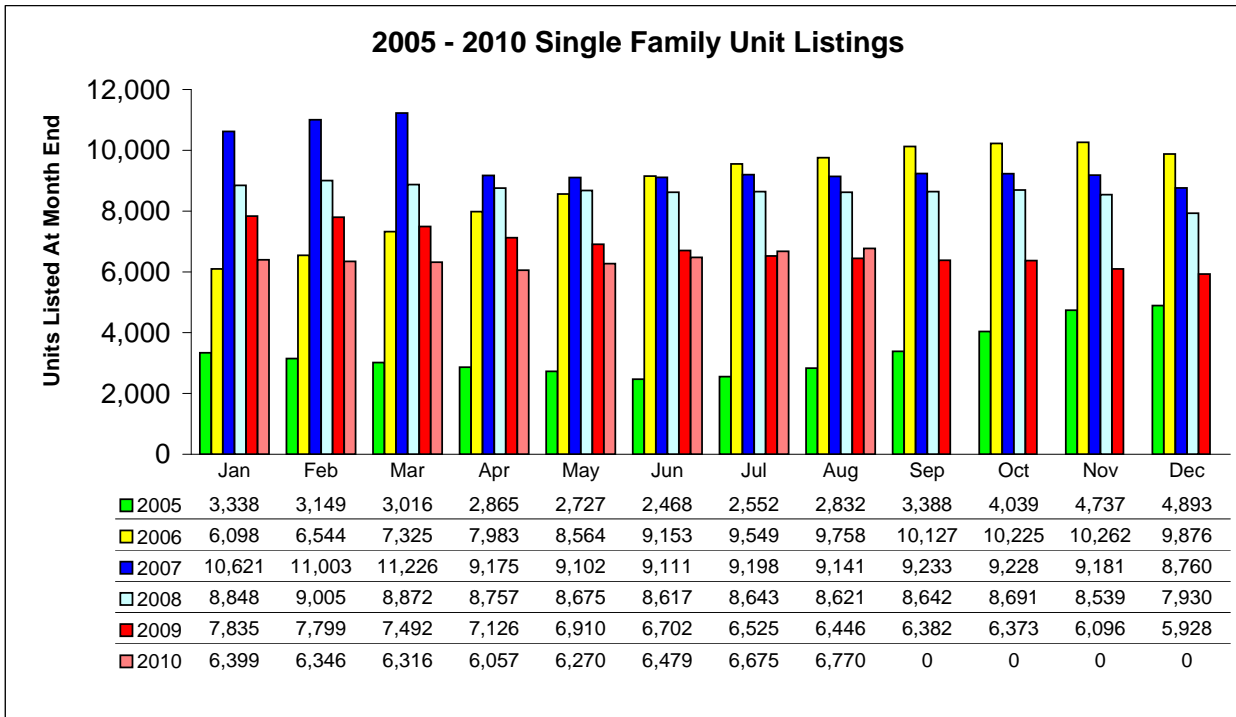
**Pinellas Realtor®
Organization**

Additional Information

**Absorption Rate (Inventory Turnover) is determined by dividing the number of units sold during the month by the total number of listings in the MLS.

Residential Graphical data represents the combined Single Family and Condo Sales data.

Single Family Listing and Sales Comparison By Unit



2010 Single Family Unit Sales

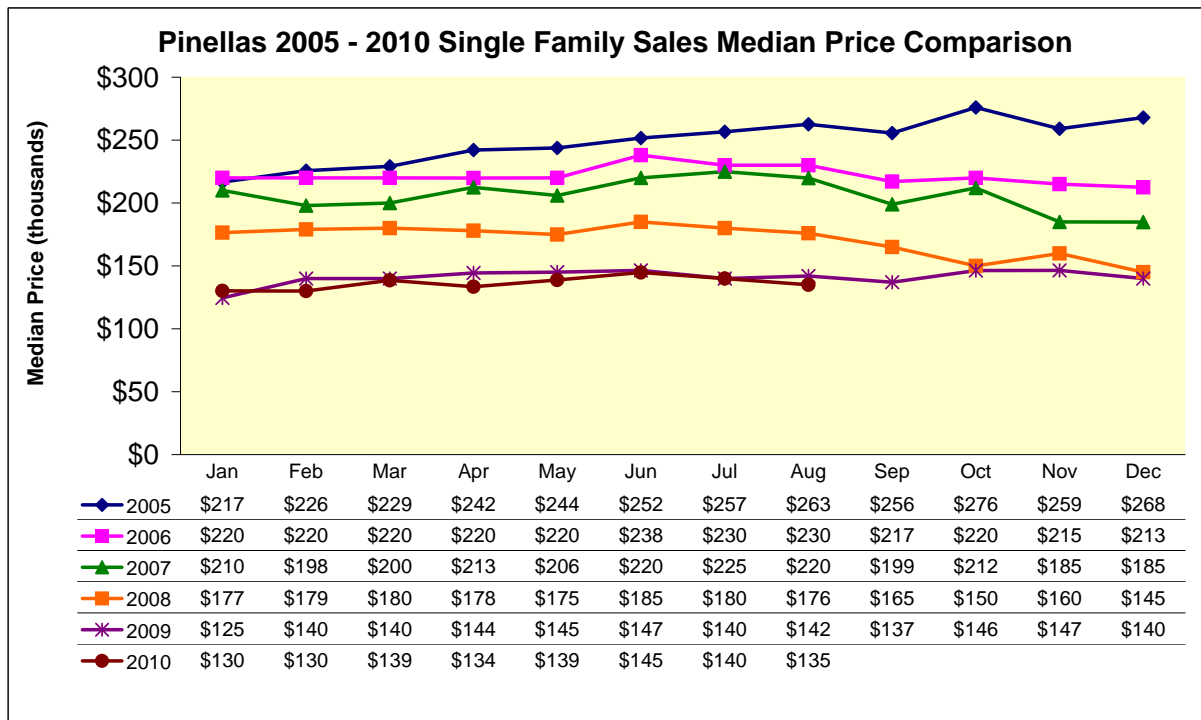
MTD Comparisons		YTD Total	Jan	Feb	Mar	Apr	May	Jun	Jul	Aug	Sep	Oct	Nov	Dec
2009 Units	7,400	Units	381	467	574	604	616	746	722	665	735	718	586	586
		% of YTD	5.1%	6.3%	7.8%	8.2%	8.3%	10.1%	9.8%	9.0%	9.9%	9.7%	7.9%	7.9%
2010 Units	5,207	Units	438	502	727	786	786	802	555	611				
		% Change	15.0%	7.5%	26.7%	30.1%	27.6%	7.5%	-23.1%	-8.1%				
2009 Median Price		(thousands)	\$124.5	\$139.9	\$140.0	\$144.4	\$145.0	\$146.5	\$140.0	\$142.0	\$137.0	\$146.3	\$146.5	\$140.0
2010 Median Price		(thousands)	\$130.1	\$130.0	\$138.5	\$133.5	\$138.8	\$144.8	\$140.0	\$135.0				
		% Change	4.5%	-7.1%	-1.1%	-7.5%	-4.3%	-1.2%	0.0%	-4.9%				
2009 Mean Price		(thousands)	\$191.2	\$199.3	\$198.2	\$201.9	\$202.1	\$201.7	\$188.6	\$195.7	\$180.5	\$190.9	\$196.2	\$199.2
2010 Mean Price		(thousands)	\$183.1	\$169.3	\$187.9	\$197.9	\$184.4	\$199.2	\$198.9	\$180.9				
		% Change	-4.2%	-15.1%	-5.2%	-2.0%	-8.8%	-1.2%	5.5%	-7.6%				

YTD Comparisons		MTD Total	Jan	Feb	Mar	Apr	May	Jun	Jul	Aug	Sep	Oct	Nov	Dec
2009 MTD	4,775	Units	381	848	1,422	2,026	2,642	3,388	4,110	4,775	5,510	6,228	6,814	7,400
2010 MTD	5,207	Units	438	940	1,667	2,453	3,239	4,041	4,596	5,207				
% Change 2010 MTD	9.0%		15.0%	10.8%	17.2%	21.1%	22.6%	19.3%	11.8%	9.0%				

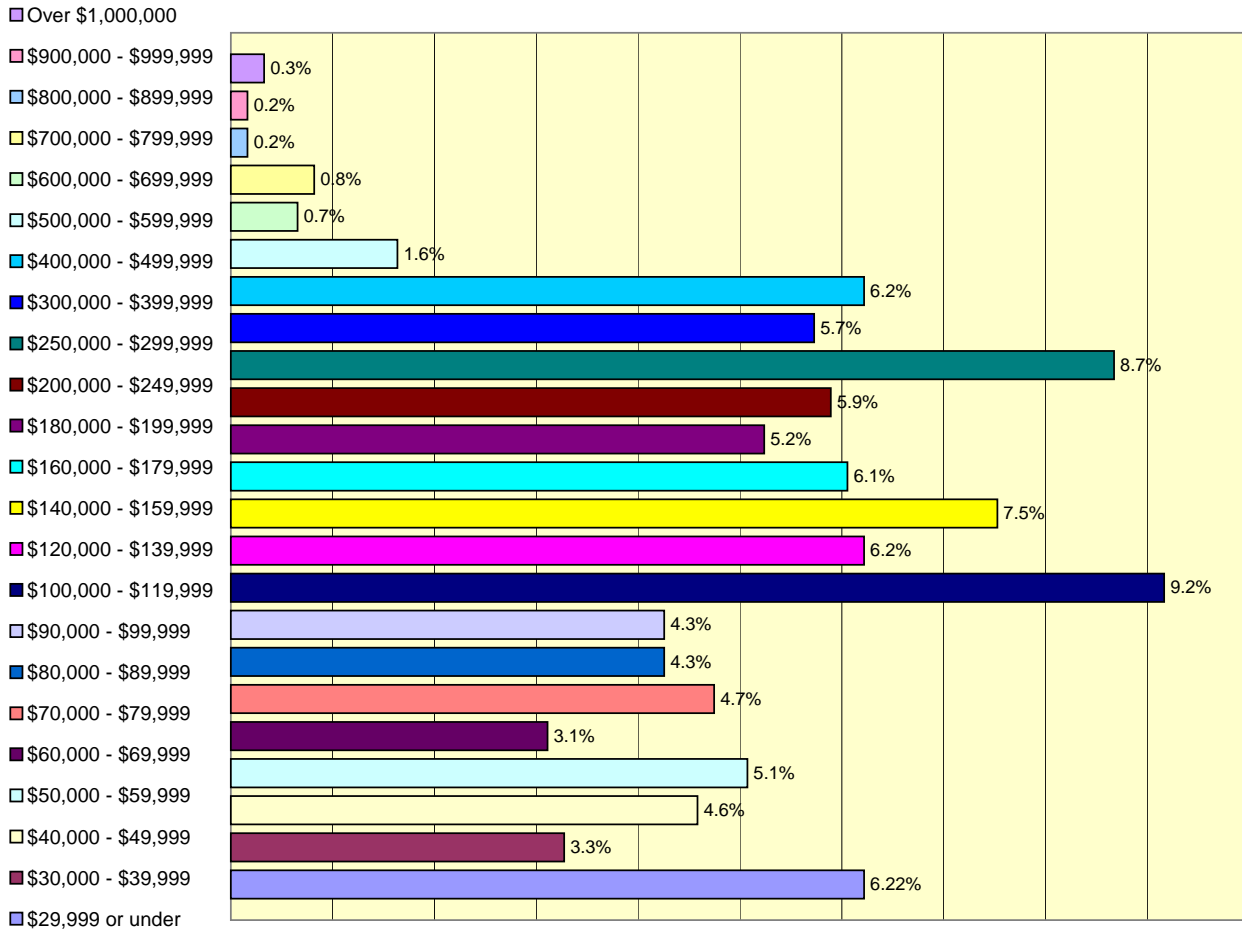
Prices by Bedroom		YTD Total	Jan	Feb	Mar	Apr	May	Jun	Jul	Aug	Sep	Oct	Nov	Dec
2010 Prices (thousands)														
2 or Less	Median Price		\$96.0	\$90.0	\$95.0	\$95.0	\$95.0	\$87.5	\$85.3	\$81.2				
	Mean Price		\$111.1	\$107.2	\$107.3	\$103.3	\$107.8	\$100.3	\$97.6	\$97.8				
3	Median Price		\$140.0	\$145.0	\$149.0	\$145.0	\$145.0	\$150.0	\$150.0	\$143.6				
	Mean Price		\$177.3	\$159.4	\$179.8	\$175.1	\$164.9	\$177.7	\$179.7	\$169.9				
4 or More	Median Price		\$247.0	\$285.0	\$288.0	\$274.0	\$260.0	\$285.0	\$304.5	\$275.0				
	Mean Price		\$337.6	\$322.0	\$342.4	\$380.2	\$345.6	\$356.6	\$364.4	\$321.0				

Single Family Unit Sales			Jan	Feb	Mar	Apr	May	Jun	Jul	Aug	Sep	Oct	Nov	Dec
Price Class	YTD Total	% of YTD												
\$29,999 or under	247	4.74%	27	23	27	38	29	40	25	38				
\$30,000 - \$39,999	139	2.67%	15	16	17	21	20	14	16	20				
\$40,000 - \$49,999	196	3.76%	17	22	24	26	22	29	28	28				
\$50,000 - \$59,999	238	4.57%	21	17	38	33	42	31	25	31				
\$60,000 - \$69,999	233	4.47%	21	26	36	23	45	34	29	19				
\$70,000 - \$79,999	229	4.40%	20	20	37	33	31	29	30	29				
\$80,000 - \$89,999	210	4.03%	21	24	32	32	26	33	16	26				
\$90,000 - \$99,999	237	4.55%	12	30	31	45	39	28	26	26				
\$100,000 - \$119,999	440	8.45%	32	41	60	81	66	68	36	56				
\$120,000 - \$139,999	485	9.31%	52	48	66	77	76	84	44	38				
\$140,000 - \$159,999	426	8.18%	28	43	63	75	68	66	37	46				
\$160,000 - \$179,999	349	6.70%	31	38	47	52	62	53	29	37				
\$180,000 - \$199,999	241	4.63%	17	25	35	29	33	42	28	32				
\$200,000 - \$249,999	397	7.62%	38	43	58	46	69	56	51	36				
\$250,000 - \$299,999	306	5.88%	21	24	39	39	45	57	28	53				
\$300,000 - \$399,999	371	7.13%	30	34	50	55	58	57	52	35				
\$400,000 - \$499,999	199	3.82%	14	7	32	31	21	34	22	38				
\$500,000 - \$599,999	94	1.81%	9	7	8	16	14	17	13	10				
\$600,000 - \$699,999	47	0.90%	4	7	11	9	3	6	3	4				
\$700,000 - \$799,999	49	0.94%	2	2	6	15	2	9	8	5				
\$800,000 - \$899,999	18	0.35%	1	1	3	3	5	3	1	1				
\$900,000 - \$999,999	8	0.15%	0	1	1	0	3	1	1	1				
Over \$1,000,000	48	0.92%	5	3	6	7	7	11	7	2				
2010 Totals	5,207	-	438	502	727	786	786	802	555	611				

Single Family Sales Median Price Comparison



2010 August Single Family Sales - Price Class Analysis



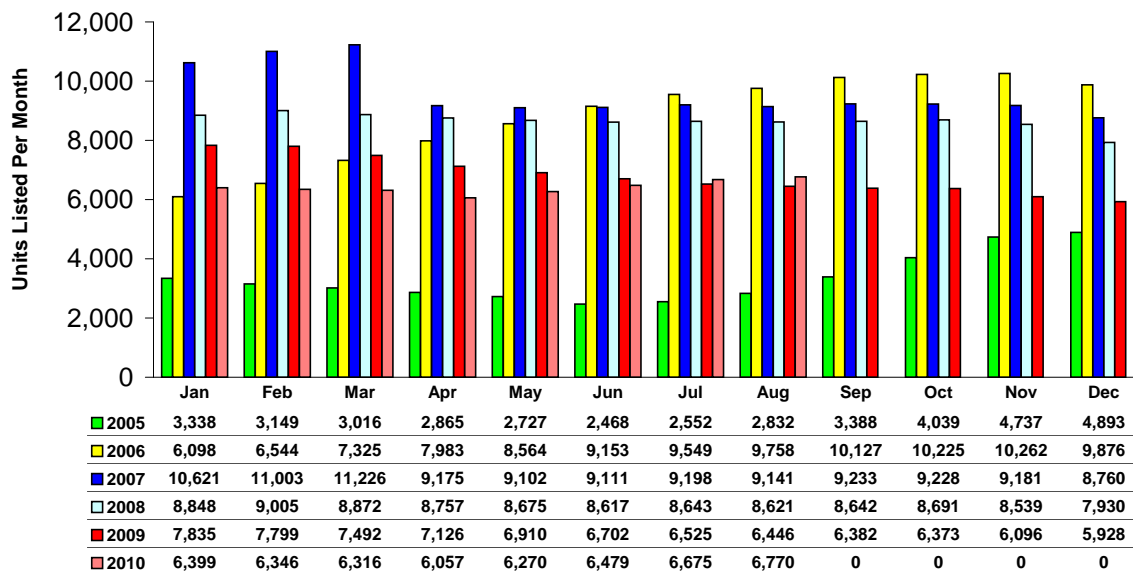
2010 Single Family Unit Listings

Single Family MTD	YTD Total	Jan	Feb	Mar	Apr	May	Jun	Jul	Aug	Sep	Oct	Nov	Dec
Previous Year (2009)	81,614	7,835	7,799	7,492	7,126	6,910	6,702	6,525	6,446	6,382	6,373	6,096	5,928
	% of YTD	9.6%	9.6%	9.2%	8.7%	8.5%	8.2%	8.0%	7.9%	7.8%	7.8%	7.5%	7.3%
Current Year (2010)	51,312	6,399	6,346	6,316	6,057	6,270	6,479	6,675	6,770				
	% Change	-18.3%	-18.6%	-15.7%	-15.0%	-9.3%	-3.3%	2.3%	5.0%				

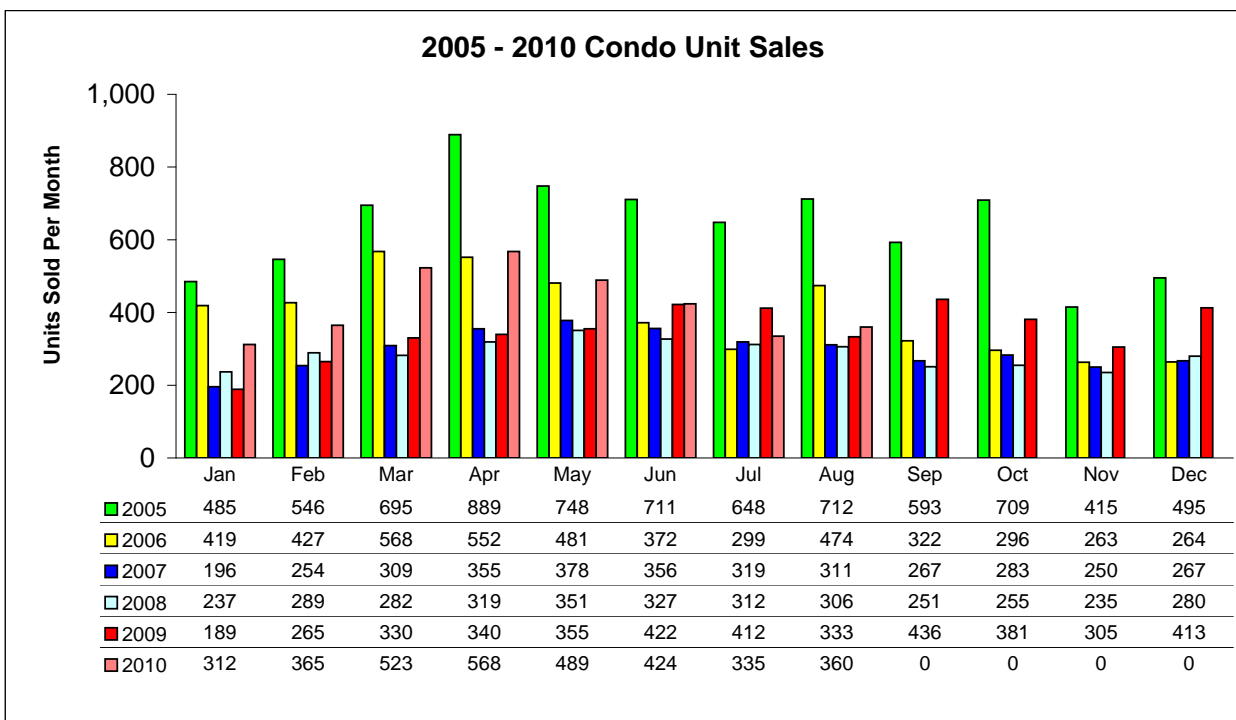
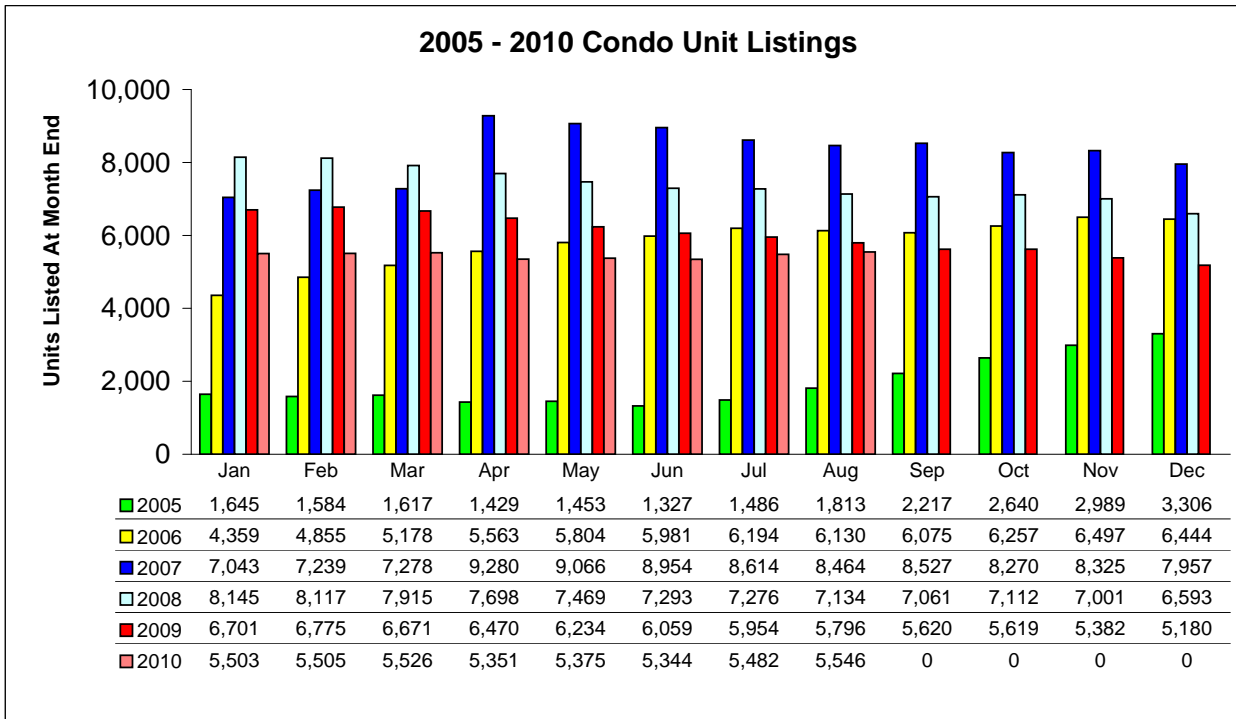
Single Family YTD	MTD Total	Jan	Feb	Mar	Apr	May	Jun	Jul	Aug	Sep	Oct	Nov	Dec
2009 MTD	56,835	7,835	15,634	23,126	30,252	37,162	43,864	50,389	56,835	63,217	69,590	75,686	81,614
2010 MTD	51,312	6,399	12,745	19,061	25,118	31,388	37,867	44,542	51,312				
	% Change 2010 MTD	-18.3%	-18.5%	-17.6%	-17.0%	-15.5%	-13.7%	-11.6%	-9.7%				

Price Class	YTD Total	% of YTD	Jan	Feb	Mar	Apr	May	Jun	Jul	Aug	Sep	Oct	Nov	Dec
\$29,999 or under	739	1.44%	80	68	88	91	90	96	111	115				
\$30,000 - \$39,999	668	1.30%	64	63	69	71	78	87	114	122				
\$40,000 - \$49,999	1,064	2.07%	108	120	105	99	139	159	153	181				
\$50,000 - \$59,999	1,306	2.55%	147	157	142	140	159	163	190	208				
\$60,000 - \$69,999	1,618	3.15%	176	181	171	171	202	223	230	264				
\$70,000 - \$79,999	1,984	3.87%	231	221	246	219	232	249	291	295				
\$80,000 - \$89,999	1,841	3.59%	224	208	214	202	220	232	255	286				
\$90,000 - \$99,999	2,078	4.05%	243	243	243	225	259	259	293	313				
\$100,000 - \$119,999	3,209	6.25%	371	392	380	378	387	416	442	443				
\$120,000 - \$139,999	4,057	7.91%	520	499	481	482	494	508	525	548				
\$140,000 - \$159,999	3,607	7.03%	487	456	462	410	430	450	452	460				
\$160,000 - \$179,999	3,284	6.40%	414	406	414	395	401	417	431	406				
\$180,000 - \$199,999	2,978	5.80%	404	379	368	356	376	377	360	358				
\$200,000 - \$249,999	4,049	7.89%	484	524	530	487	478	518	506	522				
\$250,000 - \$299,999	3,136	6.11%	389	408	403	363	376	410	405	382				
\$300,000 - \$399,999	3,886	7.57%	511	499	488	467	469	483	489	480				
\$400,000 - \$499,999	2,742	5.34%	357	353	342	336	340	330	349	335				
\$500,000 - \$599,999	1,914	3.73%	257	240	251	239	243	237	230	217				
\$600,000 - \$699,999	1,471	2.87%	188	188	188	191	184	180	180	172				
\$700,000 - \$799,999	974	1.90%	138	124	124	129	119	113	115	112				
\$800,000 - \$899,999	810	1.58%	103	100	101	101	114	105	96	90				
\$900,000 - \$999,999	702	1.37%	88	101	99	99	81	80	78	76				
Over \$1,000,000	3,195	6.23%	415	416	407	406	399	387	380	385				
2010 Totals	51,312		6,399	6,346	6,316	6,057	6,270	6,479	6,675	6,770				

2005 - 2010 Single Family Unit Listings



Condo Listing and Sales Comparison By Unit



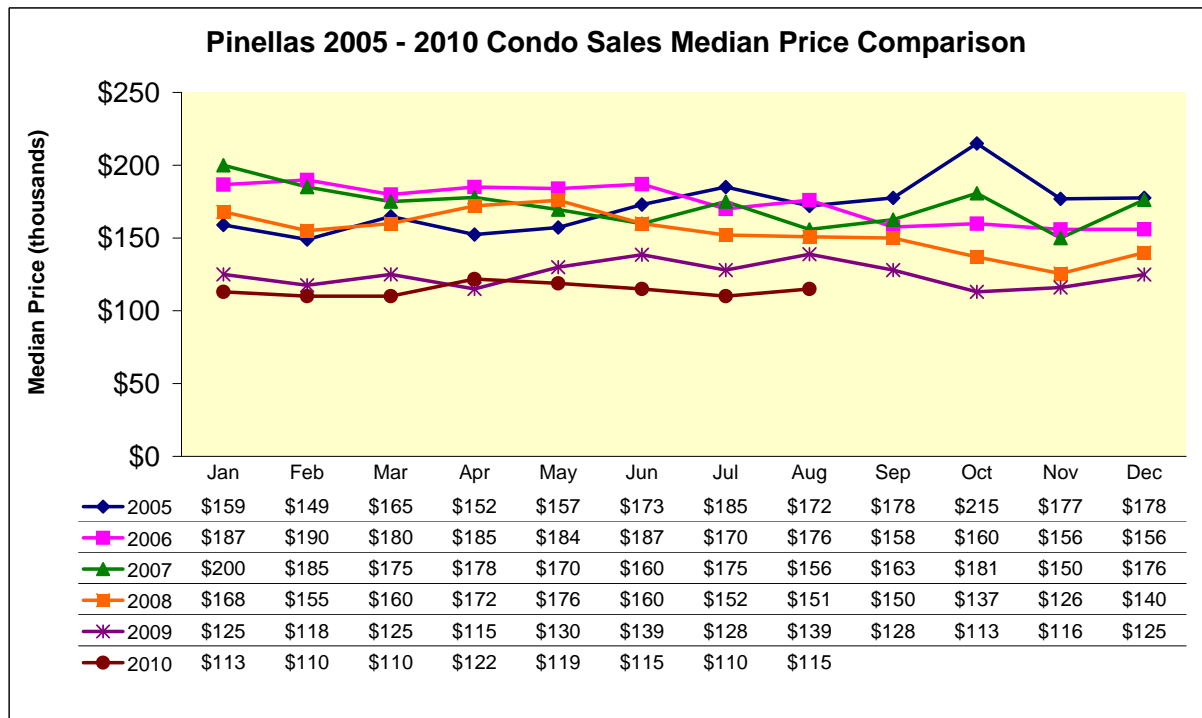
2010 Condo Unit Sales

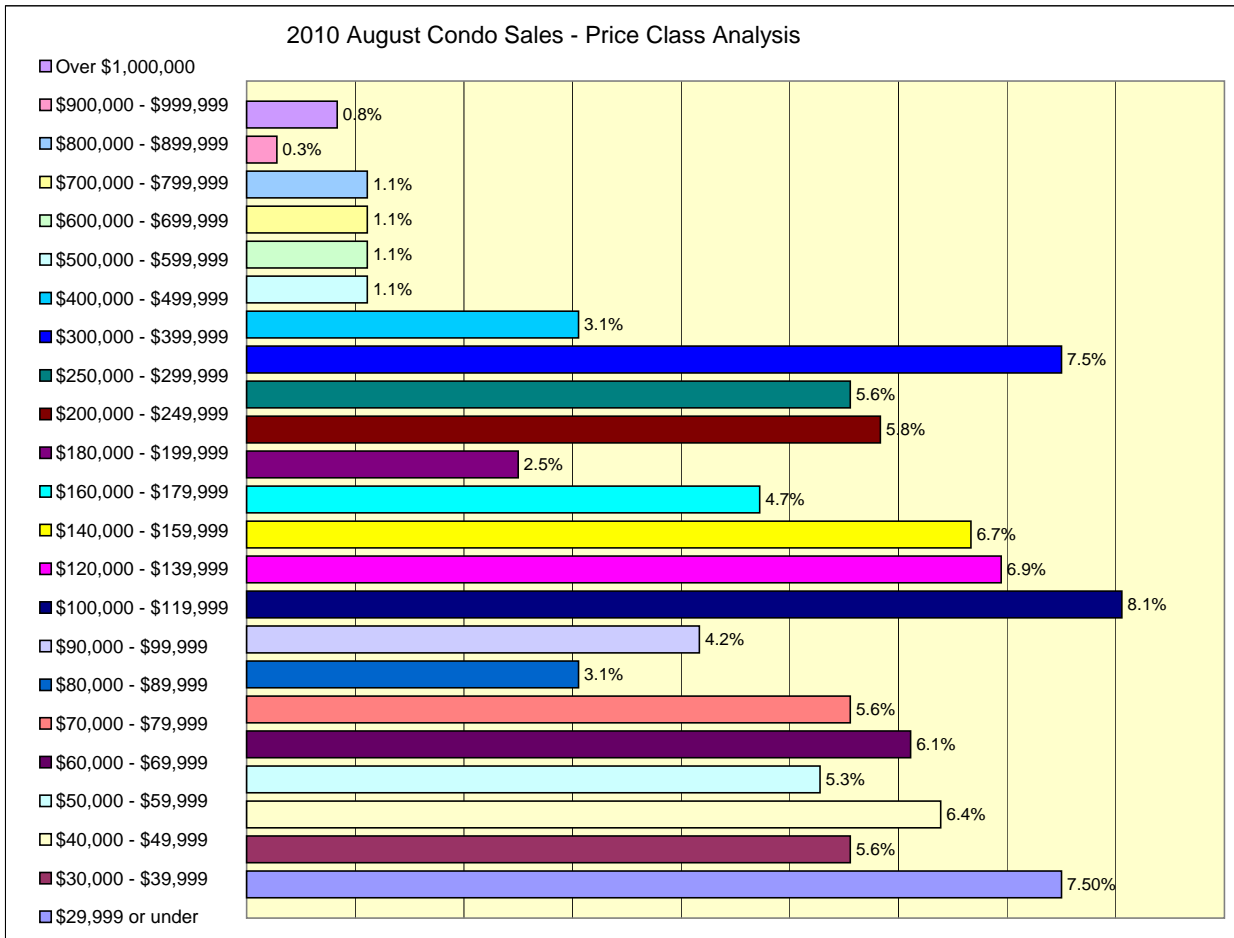
MTD Comparisons		YTD Total	Jan	Feb	Mar	Apr	May	Jun	Jul	Aug	Sep	Oct	Nov	Dec
2009 Units	4,181	Units	189	265	330	340	355	422	412	333	436	381	305	413
		% of YTD	4.5%	6.3%	7.9%	8.1%	8.5%	10.1%	9.9%	8.0%	10.4%	9.1%	7.3%	9.9%
2010 Units	3,376	Units	312	365	523	568	489	424	335	360				
		% Change	65.1%	37.7%	58.5%	67.1%	37.7%	0.5%	-18.7%	8.1%				
2009 Median Price		(thousands)	\$125.0	\$117.5	\$125.0	\$115.0	\$130.0	\$138.5	\$128.0	\$138.9	\$128.0	\$113.0	\$116.0	\$124.9
2010 Median Price		(thousands)	\$113.0	\$110.0	\$110.0	\$121.8	\$118.8	\$115.0	\$110.0	\$115.0				
		% Change	-9.6%	-6.4%	-12.0%	5.9%	-8.6%	-17.0%	-14.1%	-17.2%				
2009 Mean Price		(thousands)	\$193.9	\$158.6	\$169.5	\$166.3	\$189.9	\$194.4	\$188.4	\$192.3	\$178.4	\$164.1	\$168.5	\$191.1
2010 Mean Price		(thousands)	\$158.3	\$160.1	\$198.1	\$195.8	\$178.5	\$181.1	\$192.8	\$175.8				
		% Change	-18.4%	0.9%	16.9%	17.7%	-6.0%	-6.8%	2.3%	-8.6%				

YTD Comparisons		MTD Total	Jan	Feb	Mar	Apr	May	Jun	Jul	Aug	Sep	Oct	Nov	Dec
2009 MTD	2,646	Units	189	454	784	1,124	1,479	1,901	2,313	2,646	3,082	3,463	3,768	4,181
2010 MTD	3,376	Units	312	677	1,200	1,768	2,257	2,681	3,016	3,376				
% Change 2010 MTD	27.6%		65.1%	49.1%	53.1%	57.3%	52.6%	41.0%	30.4%	27.6%				

Condo Unit Sales														
Price Class	YTD Total	% of YTD	Jan	Feb	Mar	Apr	May	Jun	Jul	Aug	Sep	Oct	Nov	Dec
\$29,999 or under	170	5.04%	14	15	23	26	24	20	21	27				
\$30,000 - \$39,999	152	4.50%	13	12	25	28	19	19	16	20				
\$40,000 - \$49,999	218	6.46%	23	23	35	22	34	29	29	23				
\$50,000 - \$59,999	231	6.84%	16	32	46	38	29	31	20	19				
\$60,000 - \$69,999	191	5.66%	22	27	33	28	22	15	22	22				
\$70,000 - \$79,999	240	7.11%	28	24	36	41	32	35	24	20				
\$80,000 - \$89,999	165	4.89%	13	22	24	27	29	24	15	11				
\$90,000 - \$99,999	121	3.58%	12	13	22	21	14	15	9	15				
\$100,000 - \$119,999	253	7.49%	29	24	32	43	45	31	20	29				
\$120,000 - \$139,999	249	7.38%	27	33	38	47	33	29	17	25				
\$140,000 - \$159,999	198	5.86%	15	27	32	26	28	25	21	24				
\$160,000 - \$179,999	165	4.89%	26	19	21	31	21	19	11	17				
\$180,000 - \$199,999	111	3.29%	12	11	13	21	16	18	11	9				
\$200,000 - \$249,999	207	6.13%	21	13	33	39	42	23	15	21				
\$250,000 - \$299,999	156	4.62%	9	18	22	31	24	12	20	20				
\$300,000 - \$399,999	214	6.34%	9	19	25	40	34	36	24	27				
\$400,000 - \$499,999	123	3.64%	11	16	17	20	17	18	13	11				
\$500,000 - \$599,999	65	1.93%	3	10	8	12	12	10	6	4				
\$600,000 - \$699,999	34	1.01%	2	4	6	3	6	3	6	4				
\$700,000 - \$799,999	37	1.10%	2	1	7	8	2	5	8	4				
\$800,000 - \$899,999	21	0.62%	1	1	5	6	1	1	2	4				
\$900,000 - \$999,999	12	0.36%	1	0	4	3	0	2	1	1				
Over \$1,000,000	43	1.27%	3	1	16	7	5	4	4	3				
2010 Totals	3,376	-	312	365	523	568	489	424	335	360				

Condo Sales Median Price Comparison





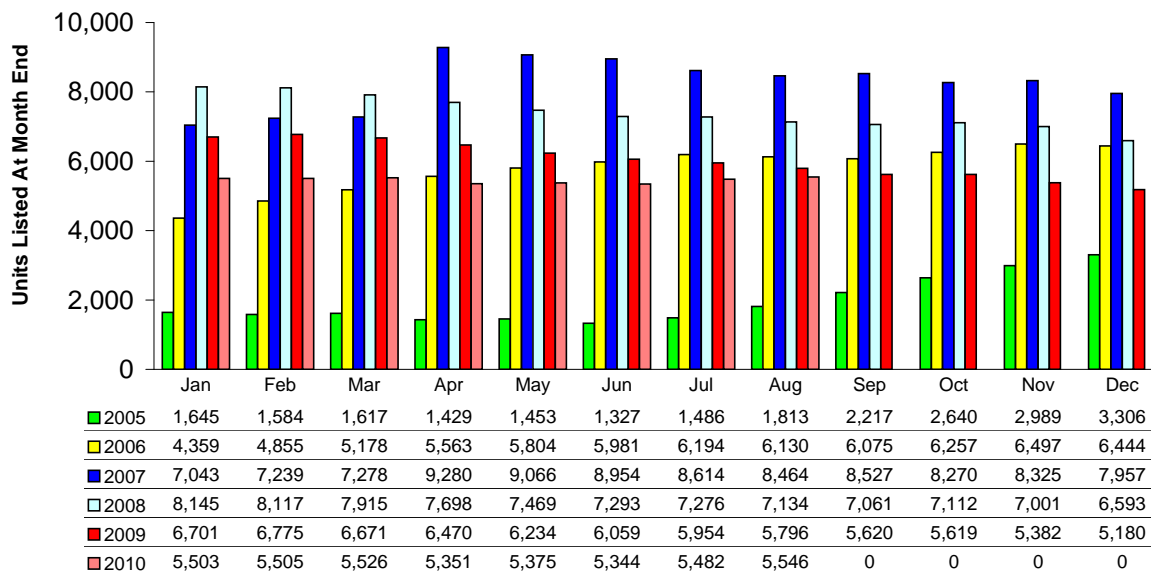
2010 Condo Unit Listings

Condo MTD	YTD Total		Jan	Feb	Mar	Apr	May	Jun	Jul	Aug	Sep	Oct	Nov	Dec
Previous Year (2009)	72,461	Units	6,701	6,775	6,671	6,470	6,234	6,059	5,954	5,796	5,620	5,619	5,382	5,180
		% of YTD	9.2%	9.3%	9.2%	8.9%	8.6%	8.4%	8.2%	8.0%	7.8%	7.8%	7.4%	7.1%
Current Year (2010)	43,632	Units	5,503	5,505	5,526	5,351	5,375	5,344	5,482	5,546				
		% Change	-17.9%	-18.7%	-17.2%	-17.3%	-13.8%	-11.8%	-7.9%	-4.3%				

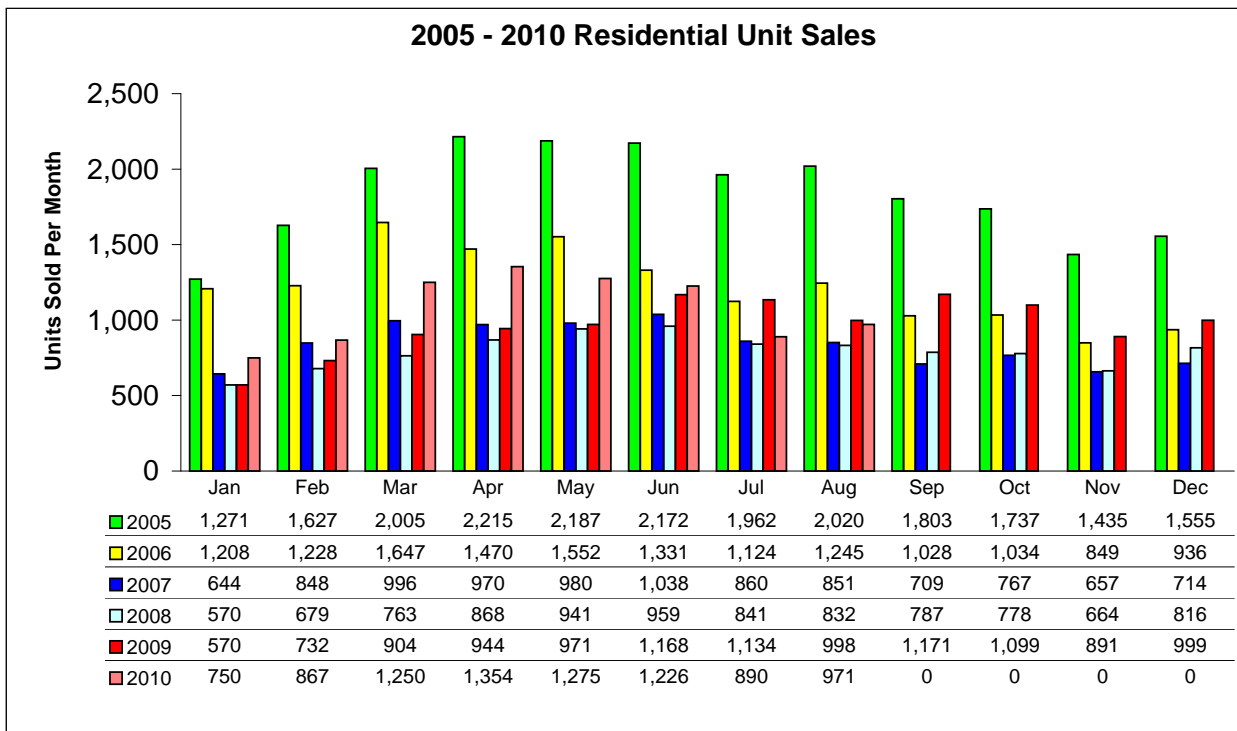
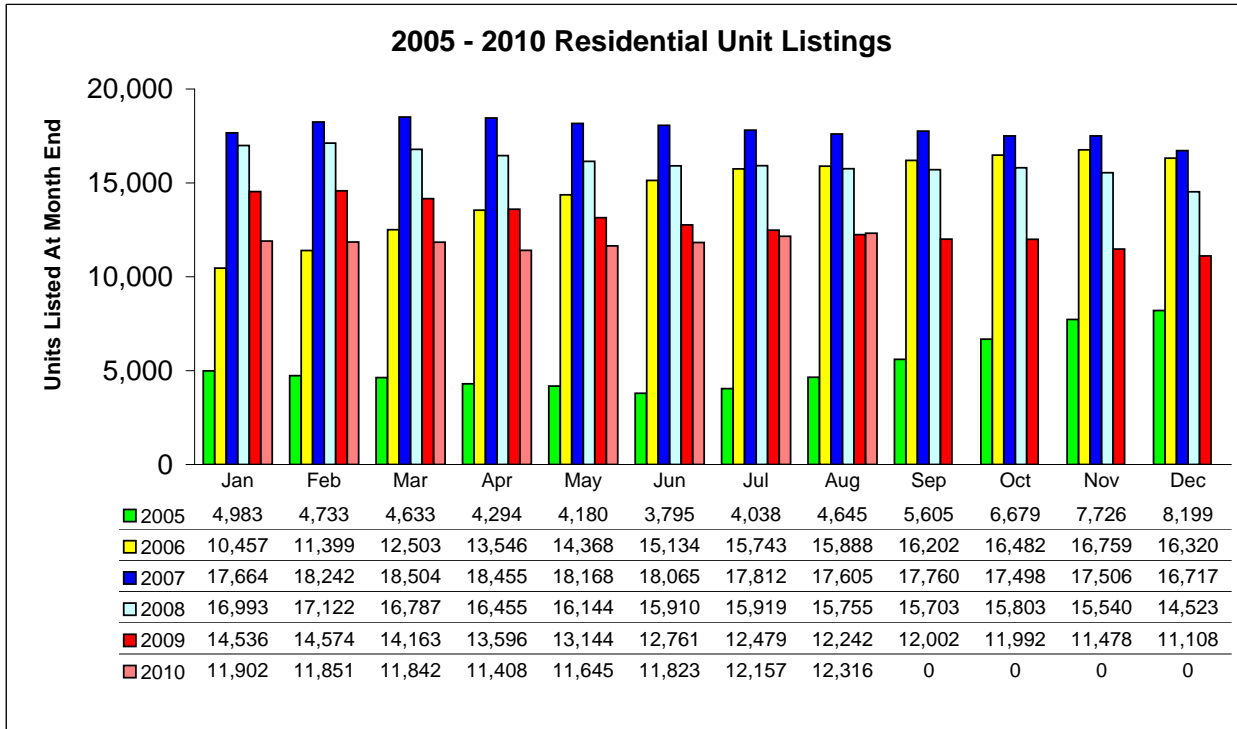
Condo YTD	MTD Total		Jan	Feb	Mar	Apr	May	Jun	Jul	Aug	Sep	Oct	Nov	Dec
2009 MTD	50,660	Units	6,701	13,476	20,147	26,617	32,851	38,910	44,864	50,660	56,280	61,899	67,281	72,461
2010 MTD	43,632	Units	5,503	11,008	16,534	21,885	27,260	32,604	38,086	43,632				
% Change 2010 MTD	-13.9%		-17.9%	-18.3%	-17.9%	-17.8%	-17.0%	-16.2%	-15.1%	-13.9%				

Condo Unit Listings			Jan	Feb	Mar	Apr	May	Jun	Jul	Aug	Sep	Oct	Nov	Dec
Price Class	YTD Total	% of YTD	Jan	Feb	Mar	Apr	May	Jun	Jul	Aug	Sep	Oct	Nov	Dec
\$29,999 or under	821	1.88%	69	82	86	87	102	109	130	156				
\$30,000 - \$39,999	1,376	3.15%	155	153	161	154	181	182	193	197				
\$40,000 - \$49,999	2,223	5.09%	246	258	275	270	284	288	292	310				
\$50,000 - \$59,999	2,243	5.14%	266	262	271	264	268	281	315	316				
\$60,000 - \$69,999	2,256	5.17%	295	266	278	266	287	276	295	293				
\$70,000 - \$79,999	2,219	5.09%	266	263	271	273	271	289	292	294				
\$80,000 - \$89,999	2,279	5.22%	277	287	273	268	292	263	291	328				
\$90,000 - \$99,999	2,349	5.38%	326	300	312	302	282	275	275	277				
\$100,000 - \$119,999	2,935	6.73%	365	383	384	347	340	345	380	391				
\$120,000 - \$139,999	3,092	7.09%	424	409	386	367	380	367	382	377				
\$140,000 - \$159,999	2,296	5.26%	309	293	294	294	271	282	289	264				
\$160,000 - \$179,999	2,002	4.59%	242	252	258	257	259	251	233	250				
\$180,000 - \$199,999	1,986	4.55%	242	251	258	255	247	246	245	242				
\$200,000 - \$249,999	3,294	7.55%	410	437	432	402	404	405	405	399				
\$250,000 - \$299,999	3,033	6.95%	402	406	386	376	376	386	358	343				
\$300,000 - \$399,999	3,451	7.91%	438	442	434	425	429	433	429	421				
\$400,000 - \$499,999	1,929	4.42%	248	248	256	251	236	227	226	237				
\$500,000 - \$599,999	1,062	2.43%	141	130	135	133	128	129	132	134				
\$600,000 - \$699,999	706	1.62%	91	92	102	98	91	77	76	79				
\$700,000 - \$799,999	591	1.35%	74	80	69	72	75	72	75	74				
\$800,000 - \$899,999	367	0.84%	51	50	56	46	44	42	40	38				
\$900,000 - \$999,999	194	0.44%	33	30	27	21	22	21	21	19				
Over \$1,000,000	928	2.13%	133	131	122	123	106	98	108	107				
2010 Totals	43,632		5,503	5,505	5,526	5,351	5,375	5,344	5,482	5,546				

2005 - 2010 Condo Unit Listings



Residential Listing and Sales Comparison By Unit
Combined Single Family and Condo Data



2010 Residential Unit Sales

MTD Comparisons		YTD Total	Jan	Feb	Mar	Apr	May	Jun	Jul	Aug	Sep	Oct	Nov	Dec
2009 Units	11,581	Units	570	732	904	944	971	1,168	1,134	998	1,171	1,099	891	999
		% of YTD	4.9%	6.3%	7.8%	8.2%	8.4%	10.1%	9.8%	8.6%	10.1%	9.5%	7.7%	8.6%
2010 Units	8,583	Units	750	867	1,250	1,354	1,275	1,226	890	971				
		% Change	31.6%	18.4%	38.3%	43.4%	31.3%	5.0%	-21.5%	-2.7%				

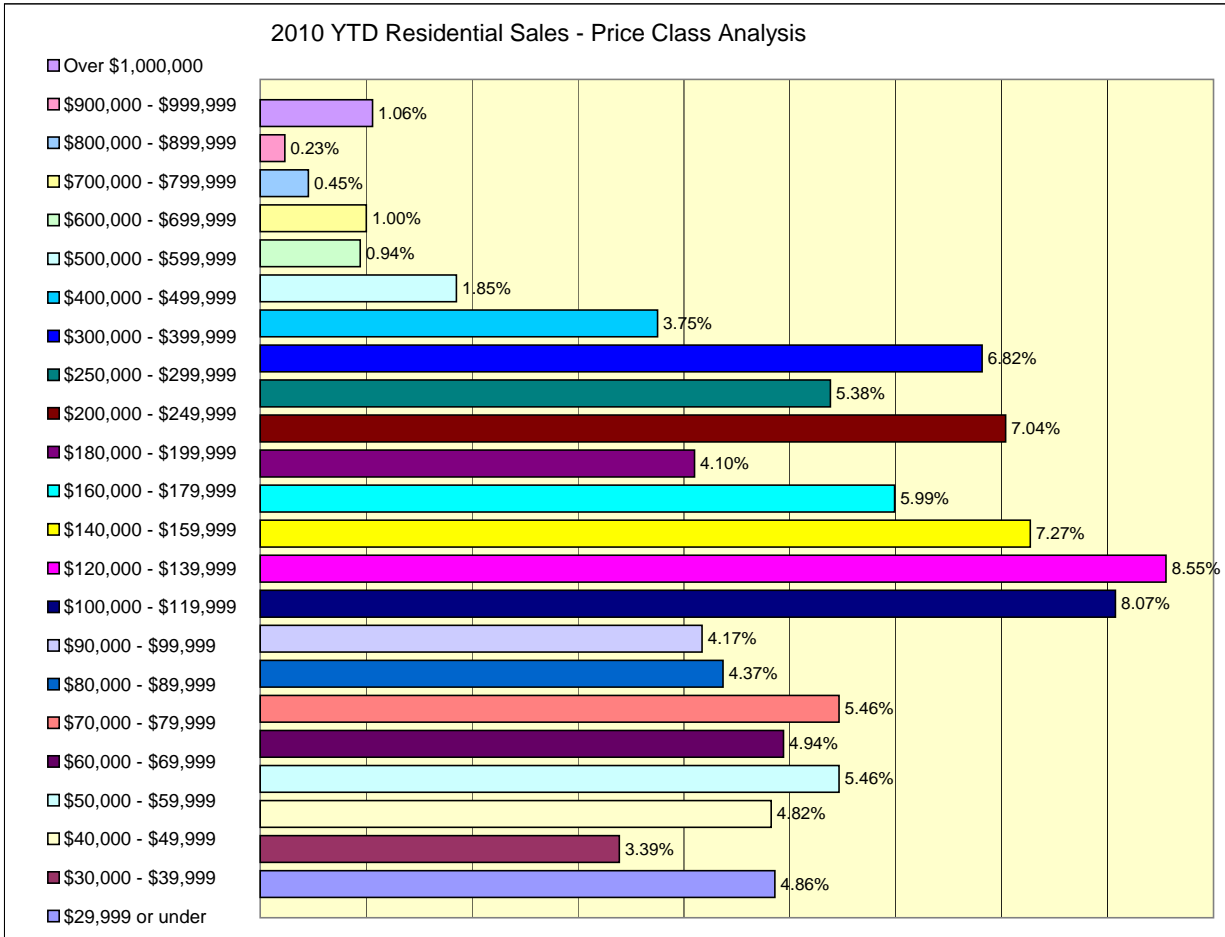
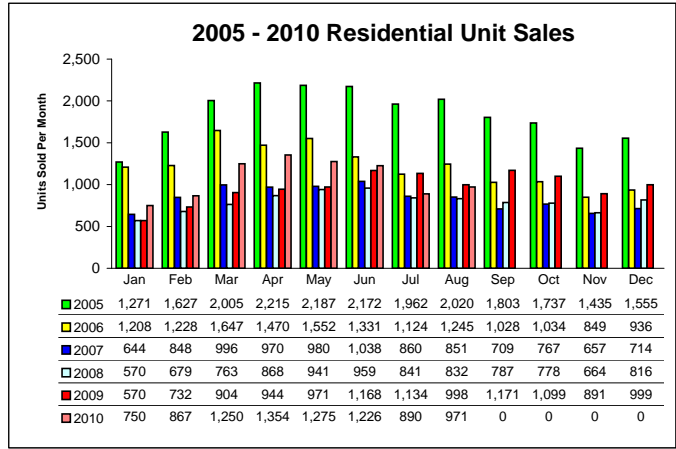
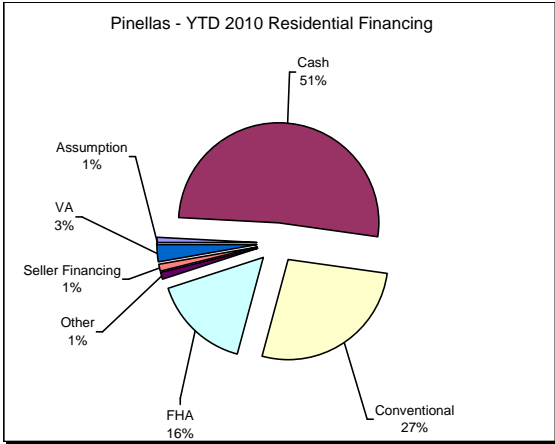
YTD Comparisons		MTD Total	Jan	Feb	Mar	Apr	May	Jun	Jul	Aug	Sep	Oct	Nov	Dec
2009 MTD	7,421	Units	570	1,302	2,206	3,150	4,121	5,289	6,423	7,421	8,592	9,691	10,582	11,581
2010 MTD	8,583	Units	750	1,617	2,867	4,221	5,496	6,722	7,612	8,583				
% Change 2010 MTD	15.7%		31.6%	24.2%	30.0%	34.0%	33.4%	27.1%	18.5%	15.7%				

2010 Price		Jan	Feb	Mar	Apr	May	Jun	Jul	Aug	Sep	Oct	Nov	Dec
Median Sales Price	thousands	125.0	125.0	129.9	130.0	132.3	135.0	130.3	125.5				
Mean Sales Price	thousands	172.8	165.4	192.2	197.1	182.1	192.9	196.6	178.9				

Residential Sales														
Price Class	YTD Total	% of YTD	Jan	Feb	Mar	Apr	May	Jun	Jul	Aug	Sep	Oct	Nov	Dec
\$29,999 or under	417	4.86%	41	38	50	64	53	60	46	65				
\$30,000 - \$39,999	291	3.39%	28	28	42	49	39	33	32	40				
\$40,000 - \$49,999	414	4.82%	40	45	59	48	56	58	57	51				
\$50,000 - \$59,999	469	5.46%	37	49	84	71	71	62	45	50				
\$60,000 - \$69,999	424	4.94%	43	53	69	51	67	49	51	41				
\$70,000 - \$79,999	469	5.46%	48	44	73	74	63	64	54	49				
\$80,000 - \$89,999	375	4.37%	34	46	56	59	55	57	31	37				
\$90,000 - \$99,999	358	4.17%	24	43	53	66	53	43	35	41				
\$100,000 - \$119,999	693	8.07%	61	65	92	124	111	99	56	85				
\$120,000 - \$139,999	734	8.55%	79	81	104	124	109	113	61	63				
\$140,000 - \$159,999	624	7.27%	43	70	95	101	96	91	58	70				
\$160,000 - \$179,999	514	5.99%	57	57	68	83	83	72	40	54				
\$180,000 - \$199,999	352	4.10%	29	36	48	50	49	60	39	41				
\$200,000 - \$249,999	604	7.04%	59	56	91	85	111	79	66	57				
\$250,000 - \$299,999	462	5.38%	30	42	61	70	69	69	48	73				
\$300,000 - \$399,999	585	6.82%	39	53	75	95	92	93	76	62				
\$400,000 - \$499,999	322	3.75%	25	23	49	51	38	52	35	49				
\$500,000 - \$599,999	159	1.85%	12	17	16	28	26	27	19	14				
\$600,000 - \$699,999	81	0.94%	6	11	17	12	9	9	9	8				
\$700,000 - \$799,999	86	1.00%	4	3	13	23	4	14	16	9				
\$800,000 - \$899,999	39	0.45%	2	2	8	9	6	4	3	5				
\$900,000 - \$999,999	20	0.23%	1	1	5	3	3	3	2	2				
Over \$1,000,000	91	1.06%	8	4	22	14	12	15	11	5				
2010 Totals	8,583	-	750	867	1,250	1,354	1,275	1,226	890	971				

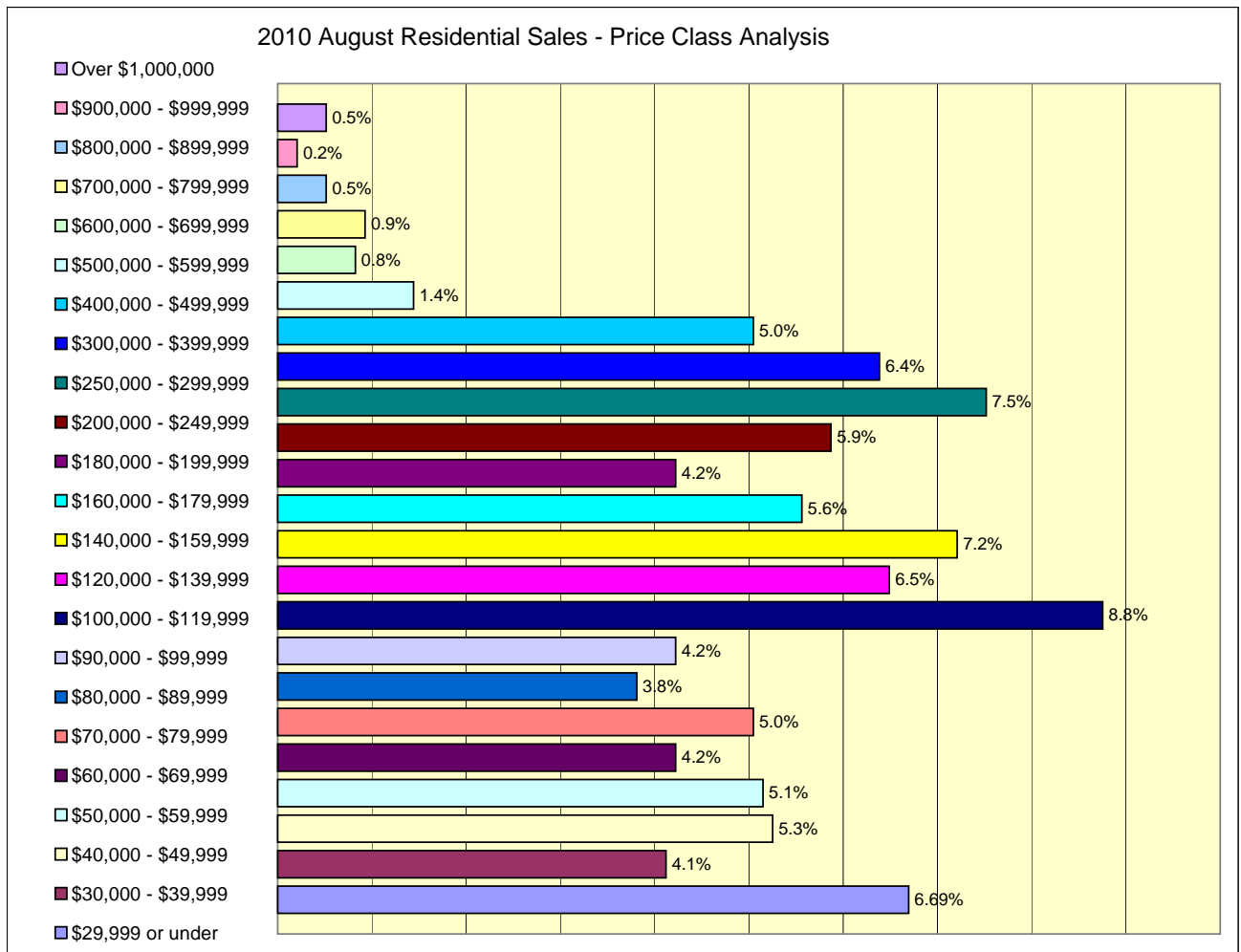
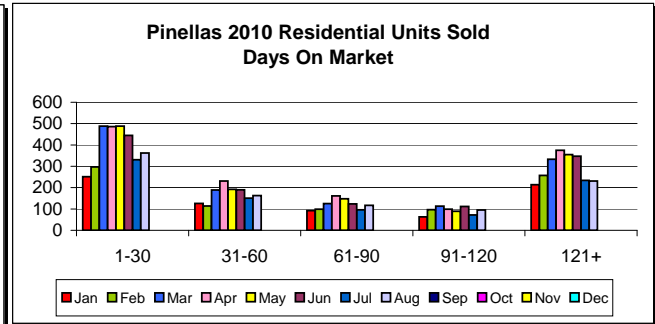
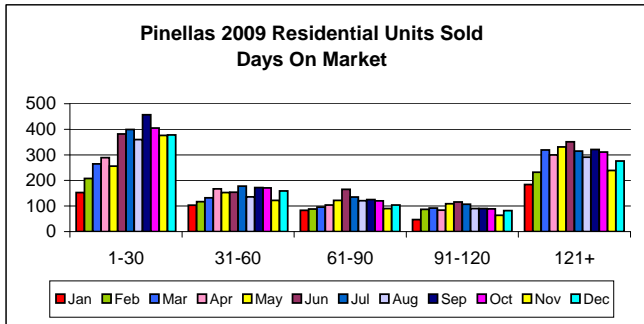
Days On Market	% of YTD	Jan	Feb	Mar	Apr	May	Jun	Jul	Aug	Sep	Oct	Nov	Dec
1-30	3,148	36.81%	251	297	488	486	488	445	331	362	0	0	
31-60	1,356	15.86%	126	114	189	231	192	190	151	163	0	0	
61-90	962	11.25%	92	99	125	161	148	124	96	117	0	0	
91-120	740	8.65%	63	97	113	99	89	112	72	95	0	0	
121-180	989	11.56%	83	99	142	176	150	134	102	103	0	0	
180+	1,357	15.87%	131	158	191	199	205	213	132	128	0	0	

Financing	% of YTD	Jan	Feb	Mar	Apr	May	Jun	Jul	Aug	Sep	Oct	Nov	Dec
Assumption	62	0.73%	4	3	7	22	9	7	4	6	0	0	
Cash	4,366	51.38%	392	487	647	682	631	557	461	509	0	0	
Conventional	2,287	26.92%	211	213	347	339	303	336	264	274	0	0	
FHA	1,366	16.08%	110	114	186	222	254	232	112	136	0	0	
Other	86	1.01%	7	8	12	20	7	13	9	10	0	0	
Seller Financing	101	1.19%	4	8	16	25	12	23	7	6	0	0	
VA	229	2.70%	12	28	28	30	41	40	25	25	0	0	



Pinellas Realtor Organization - PRO - Suncoast MLS
 Data reported here represents the combined Single Family and Condominium/Co-op Sales. The reported sales for the former Greater Clearwater Association of REALTORS (GCAR) and the St Petersburg Suncoast Association of REALTORS (SSAR) have been combined and averages calculated where appropriate for trend comparisons.

Reported sales are dependent upon timeliness of sales and totality of information reported by participants. The data reflects only the sales published through the Pinellas Realtor Organization MLS and does not include all sales in the reported areas. Neither PRO nor the Suncoast MLS is in any way responsible for its accuracy.



2010 Combined Listings

Residential MTD	YTD Total		Jan	Feb	Mar	Apr	May	Jun	Jul	Aug	Sep	Oct	Nov	Dec
2009 Units	154,075	Units	14,536	14,574	14,163	13,596	13,144	12,761	12,479	12,242	12,002	11,992	11,478	11,108
		% of YTD	9.4%	9.5%	9.2%	8.8%	8.5%	8.3%	8.1%	7.9%	7.8%	7.8%	7.4%	7.2%
2010 Units	94,944	Units	11,902	11,851	11,842	11,408	11,645	11,823	12,157	12,316				
		% Change	-18.1%	-18.7%	-16.4%	-16.1%	-11.4%	-7.4%	-2.6%	0.6%				

Residential YTD	MTD Total		Jan	Feb	Mar	Apr	May	Jun	Jul	Aug	Sep	Oct	Nov	Dec
2009 MTD	107,495	Units	14,536	29,110	43,273	56,869	70,013	82,774	95,253	107,495	119,497	131,489	142,967	154,075
2010 MTD	94,944	Units	11,902	23,753	35,595	47,003	58,648	70,471	82,628	94,944				
% Change 2010 MTD	-11.7%		-18.1%	-18.4%	-17.7%	-17.3%	-16.2%	-14.9%	-13.3%	-11.7%				

Residential Listings			Jan	Feb	Mar	Apr	May	Jun	Jul	Aug	Sep	Oct	Nov	Dec
Price Class	YTD Total	% of YTD												
\$29,999 or under	1,560	1.64%	149	150	174	178	192	205	241	271				
\$30,000 - \$39,999	2,044	2.15%	219	216	230	225	259	269	307	319				
\$40,000 - \$49,999	3,287	3.46%	354	378	380	369	423	447	445	491				
\$50,000 - \$59,999	3,549	3.74%	413	419	413	404	427	444	505	524				
\$60,000 - \$69,999	3,874	4.08%	471	447	449	437	489	499	525	557				
\$70,000 - \$79,999	4,203	4.43%	497	484	517	492	503	538	583	589				
\$80,000 - \$89,999	4,120	4.34%	501	495	487	470	512	495	546	614				
\$90,000 - \$99,999	4,427	4.66%	569	543	555	527	541	534	568	590				
\$100,000 - \$119,999	6,144	6.47%	736	775	764	725	727	761	822	834				
\$120,000 - \$139,999	7,149	7.53%	944	908	867	849	874	875	907	925				
\$140,000 - \$159,999	5,903	6.22%	796	749	756	704	701	732	741	724				
\$160,000 - \$179,999	5,286	5.57%	656	658	672	652	660	668	664	656				
\$180,000 - \$199,999	4,964	5.23%	646	630	626	611	623	623	605	600				
\$200,000 - \$249,999	7,343	7.73%	894	961	962	889	882	923	911	921				
\$250,000 - \$299,999	6,169	6.50%	791	814	789	739	752	796	763	725				
\$300,000 - \$399,999	7,337	7.73%	949	941	922	892	898	916	918	901				
\$400,000 - \$499,999	4,671	4.92%	605	601	598	587	576	557	575	572				
\$500,000 - \$599,999	2,976	3.13%	398	370	386	372	371	366	362	351				
\$600,000 - \$699,999	2,177	2.29%	279	280	290	289	275	257	256	251				
\$700,000 - \$799,999	1,565	1.65%	212	204	193	201	194	185	190	186				
\$800,000 - \$899,999	1,177	1.24%	154	150	157	147	158	147	136	128				
\$900,000 - \$999,999	896	0.94%	121	131	126	120	103	101	99	95				
Over \$1,000,000	4,123	4.34%	548	547	529	529	505	485	488	492				
2010 Totals	94,944	-	11,902	11,851	11,842	11,408	11,645	11,823	12,157	12,316				

2005 - 2010 Residential Listing Comparison

